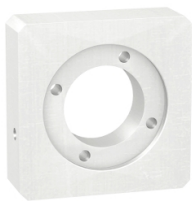


Product data sheet

Specifications



adaptation kit, Lexium 28, for assembly motor and gearbox

GBK0800801C

⚠ Discontinued on: Mar 31, 2023

⚠ End-of-service on: May 30, 2023

⚠ Discontinued

Main

Range Compatibility	Lexium 28
Product Or Component Type	Adaptation kit
Device Short Name	GBK
Accessory / Separate Part Category	Adaptation accessory
Product Compatibility	BCH2
Accessory / Separate Part Destination	For assembly motor and gearbox
Kit Composition	A shaft end adaptor An adaptor plate Screws and bolts for mounting
Gearbox External Diameter	80 mm

Complementary

Motor Flange Size	80 mm
Number Of Motor Stacks	1
Length	31.2 mm
Net Weight	0.46 kg

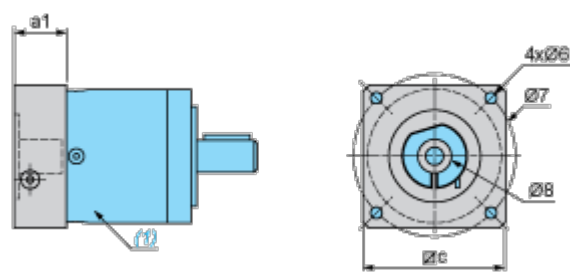
Packing Units

Unit Type Of Package 1	PCE
Number Of Units In Package 1	1
Package 1 Height	7.8 cm
Package 1 Width	16.0 cm
Package 1 Length	17.7 cm
Package 1 Weight	383.0 g
Unit Type Of Package 2	S04
Number Of Units In Package 2	10
Package 2 Height	30.0 cm
Package 2 Width	40.0 cm
Package 2 Length	60.0 cm
Package 2 Weight	5.082 kg

Disclaimer: This documentation is not intended as a substitute for and is not to be used for determining suitability or reliability of these products for specific user applications

Dimensions Drawings

Dimensions



- (1) Gearbox
- Ø8 shaft end adaptor in case motor shaft diameter is smaller than gearbox input coupling diameter

Values in mm

a1	c	Ø6	Ø7	Ø8
31.2	80	M6	90	19 x 14 x 26

Values in in.

a1	c	Ø6	Ø7	Ø8
1.23	3.14	M6	3.54	0.75 x 0.55 x 1.02