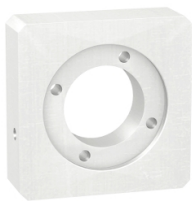


Product data sheet

Specifications



adaptation kit, Lexium SD3, for assembly motor and gearbox

GBK0400572S

Main

| | |
|---------------------------------------|--|
| Range Compatibility | Lexium SD3 |
| Product Or Component Type | Adaptation kit |
| Device Short Name | GBK |
| Accessory / Separate Part Category | Adaptation accessory |
| Product Compatibility | BRS3 |
| Accessory / Separate Part Destination | For assembly motor and gearbox |
| Kit Composition | An adaptor plate Screws and bolts for mounting A shaft end adaptor |
| Gearbox External Diameter | 40 mm |

Complementary

| | |
|------------------------|--------|
| Motor Flange Size | 57 mm |
| Number Of Motor Stacks | 2 1 |
| Length | 15 mm |
| Net Weight | 0.1 kg |

Packing Units

| | |
|------------------------------|----------|
| Unit Type Of Package 1 | PCE |
| Number Of Units In Package 1 | 1 |
| Package 1 Height | 8.0 cm |
| Package 1 Width | 16.2 cm |
| Package 1 Length | 17.8 cm |
| Package 1 Weight | 211.0 g |
| Unit Type Of Package 2 | S06 |
| Number Of Units In Package 2 | 50 |
| Package 2 Height | 73.5 cm |
| Package 2 Width | 60.0 cm |
| Package 2 Length | 80.0 cm |
| Package 2 Weight | 23.55 kg |

Contractual warranty

Disclaimer: This documentation is not intended as a substitute for and is not to be used for determining suitability or reliability of these products for specific user applications

Warranty

18 months

Sustainability

Green Premium™ label is Schneider Electric's commitment to delivering products with best-in-class environmental performance. Green Premium promises compliance with the latest regulations, transparency on environmental impacts, as well as circular and low-CO₂ products.

Guide to assessing product sustainability is a white paper that clarifies global eco-label standards and how to interpret environmental declarations.

[Learn more about Green Premium >](#)

[Guide to assess a product's sustainability >](#)



Transparency RoHS/REACH

Well-being performance

✓ Mercury Free

✓ Rohs Exemption Information [Yes](#)

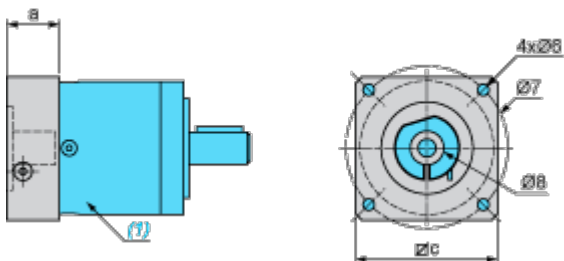
✓ Pvc Free

Certifications & Standards

| | |
|---------------------------|---|
| Reach Regulation | REACH Declaration |
| Eu Rohs Directive | Pro-active compliance (Product out of EU RoHS legal scope) |
| China Rohs Regulation | China RoHS declaration Product out of China RoHS scope. Substance declaration for your information |
| Environmental Disclosure | Product Environmental Profile |
| Circularity Profile | No need of specific recycling operations |
| California Proposition 65 | WARNING: This product can expose you to chemicals including: Lead and lead compounds, which is known to the State of California to cause cancer and birth defects or other reproductive harm. For more information go to www.P65Warnings.ca.gov |

Dimensions Drawings

Dimensions



- (1) Gearbox
- Ø8 shaft end adaptor in case motor shaft diameter is smaller than gearbox input coupling diameter

Values in mm

| a | c | Ø6 | Ø7 | Ø8 (outer diameter x inner diameter x length) |
|----|----|----|------|---|
| 15 | 60 | M5 | 66.7 | 8 x 6.35 x 16 |

Values in in.

| a | c | Ø6 | Ø7 | Ø8 (outer diameter x inner diameter x length) |
|------|------|----|------|---|
| 0.59 | 2.36 | M5 | 2.63 | 0.31 x 0.25 x 0.63 |