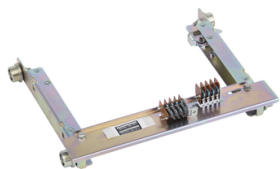


Product data sheet

Specifications



Rolling base, EasyPact EXE, phase distance 150mm, stroke 200mm, contact distance 205mm, beam 503mm

EXETRKBK1

! Discontinued

! Discontinued on: Sep 21, 2022

Main

| | |
|------------------------------------|--------------------|
| Range Of Product | EasyPact EXE |
| Product Or Component Type | Rolling base |
| Accessory / Separate Part Category | Mounting accessory |
| Phase Distance | 150 mm |
| Inter Contact Distance | 205 mm |
| Shaft Length | 200 mm |

Complementary

| | |
|-------------------------------|---|
| Contacts Type And Composition | 4 NO connected position 4 NO disconnected position |
| Net Weight | 4.1 kg |
| Width | 503 mm trolley beam: |
| Quantity Per Set | Set of 1 |

Packing Units

| | |
|------------------------------|---------|
| Unit Type Of Package 1 | PCE |
| Number Of Units In Package 1 | 1 |
| Package 1 Height | 13.5 cm |
| Package 1 Width | 23 cm |
| Package 1 Length | 54.5 cm |
| Package 1 Weight | 5.99 kg |
| Unit Type Of Package 2 | S06 |
| Number Of Units In Package 2 | 12 |
| Package 2 Height | 73 cm |
| Package 2 Width | 60 cm |
| Package 2 Length | 80 cm |
| Package 2 Weight | 79 kg |

Disclaimer: This documentation is not intended as a substitute for and is not to be used for determining suitability or reliability of these products for specific user applications