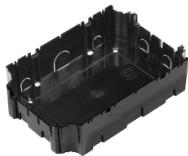


Product data sheet

Specifications

Ultra - base box - 6 modules



ETK44712

⚠ Discontinued on: Jun 30, 2023

⚠ Discontinued

Main

Range Of Product	Ultra
Product Or Component Type	Base box
Type Of Floor	Screeded floor Raised floor In-cavity floor
Floor Box Shape	Rectangular
Colour Tint	Grey (RAL 7011)
Quantity Per Set	Set of 4

Complementary

Cable Entry	2 knock-outs diameter: 30 mm 8 knock-outs diameter: 18 mm
Number Of Modules	6 modules
Material	PA (polyamide) 6 GF10
Height	65 mm
Width	165 mm
Depth	240 mm

Environment

Standards	IEC 60670-1 UNE 20451
Ambient Air Temperature For Operation	-5...60 °C
Ip Degree Of Protection	IP20

Packing Units

Unit Type Of Package 1	PCE
Number Of Units In Package 1	1
Package 1 Height	6.5 cm
Package 1 Width	1.6 cm
Package 1 Length	24 cm
Package 1 Weight	187 g
Unit Type Of Package 2	BB1
Number Of Units In Package 2	4

Disclaimer: This documentation is not intended as a substitute for and is not to be used for determining suitability or reliability of these products for specific user applications

Package 2 Height	19 cm
Package 2 Width	21.2 cm
Package 2 Length	28.3 cm
Package 2 Weight	925 g
Unit Type Of Package 3	CAR
Number Of Units In Package 3	24
Package 3 Height	30 cm
Package 3 Width	40 cm
Package 3 Length	60 cm
Package 3 Weight	5.112 kg

Contractual warranty

Warranty	18 months
----------	-----------

Sustainability

Green Premium™ label is Schneider Electric's commitment to delivering products with best-in-class environmental performance. Green Premium promises compliance with the latest regulations, transparency on environmental impacts, as well as circular and low-CO₂ products.

Guide to assessing product sustainability is a white paper that clarifies global eco-label standards and how to interpret environmental declarations.

[Learn more about Green Premium >](#)

[Guide to assess a product's sustainability >](#)

Eu Rohs Directive	Not applicable, out of EU RoHS legal scope
-------------------	--
