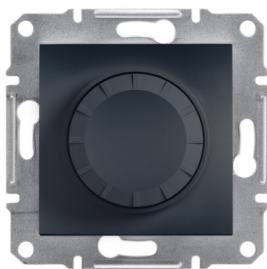


Product data sheet

Specifications



Asfora - Rotary Dimmer/315RC/2-way (MTN5136-0000), wo frame, anthracite

EPH6600171

⚠ Discontinued on: Dec 31, 2023

⚠ Discontinued

Main

Range	Asfora
Product Or Component Type	Dimmer
Device Presentation	Mechanism with fixing frame
Load Type	230 V AC halogen lamp: 20...315 W 230 V AC incandescent lamp: 20...315 W Low voltage halogen lamp with electronic transformer: 20...315 W
Colour Tint	Anthracite
Type Of Packing	Box

Complementary

Device Mounting	Flush
Switch Function	1-pole 2-way
Dimmer Control	Rotary push type
Dimmer Application	Capacitive load Ohmic load
Protection Type	Short-circuit and overload protection with automatic reset
[Ue] Rated Operational Voltage	230 V AC 50 Hz
Surface Finish	Painted
Material	ABS (acrylonitrile butadiene-styrene): central plate ABS (acrylonitrile butadiene-styrene): knob
Connections - Terminals	Pillar terminals
Number Of Cables	2 cable(s) 2.5 mm²
Cable Stiffness	Rigid Flexible
Wire Stripping Length	8 mm
Conductor Material	Copper
Fixing Mode	Claws53...78 mm
Height	71 mm
Width	71 mm
Depth	50 mm
Projecting Depth	21 mm
Net Weight	0.099 kg

Disclaimer: This documentation is not intended as a substitute for and is not to be used for determining suitability or reliability of these products for specific user applications

Environment

Product Certifications	UKR TSE VDE FIMKO NEMKO SEMKO GOST
Quality Labels	CE
Ip Degree Of Protection	IP20

Packing Units

Unit Type Of Package 1	PCE
Number Of Units In Package 1	1
Package 1 Height	6.000 cm
Package 1 Width	8.500 cm
Package 1 Length	8.500 cm
Package 1 Weight	142.000 g
Unit Type Of Package 2	S02
Number Of Units In Package 2	24
Package 2 Height	15.000 cm
Package 2 Width	30.000 cm
Package 2 Length	40.000 cm
Package 2 Weight	3.647 kg
Unit Type Of Package 3	P12
Number Of Units In Package 3	384
Package 3 Height	45.000 cm
Package 3 Width	80.000 cm
Package 3 Length	120.000 cm
Package 3 Weight	70.352 kg

Sustainability

Green Premium™ label is Schneider Electric's commitment to delivering products with best-in-class environmental performance. Green Premium promises compliance with the latest regulations, transparency on environmental impacts, as well as circular and low-CO₂ products.

Guide to assessing product sustainability is a white paper that clarifies global eco-label standards and how to interpret environmental declarations.

[Learn more about Green Premium >](#)

[Guide to assess a product's sustainability >](#)

Well-being performance

 Mercury Free	
 Rohs Exemption Information	Yes
Reach Regulation	REACH Declaration
Eu Rohs Directive	Compliant with Exemptions
China Rohs Regulation	China RoHS declaration Product out of China RoHS scope. Substance declaration for your information
Weee	The product must be disposed on European Union markets following specific waste collection and never end up in rubbish bins