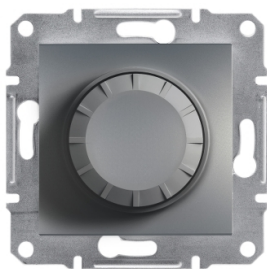


# Product data sheet

Specifications



## Asfora - Rotary Dimmer/600RL/2-way (MTN5133-0000), wo frame, steel

EPH6400162

⚠ Discontinued on: Dec 31, 2023

⚠ Discontinued

### Main

Range	Asfora
Product Or Component Type	Dimmer
Device Presentation	Mechanism with fixing frame
Load Type	230 V AC halogen lamp: 40...600 W 230 V AC incandescent lamp: 40...600 W Low voltage halogen lamp with ferromagnetic transformer: 40...600 W
Colour Tint	Steel
Type Of Packing	Box

### Complementary

Device Mounting	Flush
Switch Function	1-pole 2-way
Dimmer Control	Rotary push type
Dimmer Application	Inductive load Ohmic load
Protection Type	Fuse protection
Associated Fuse Rating	6.3 A
[Ue] Rated Operational Voltage	230 V AC 50 Hz
Surface Finish	Painted
Material	ABS (acrylonitrile butadiene-styrene): central plate ABS (acrylonitrile butadiene-styrene): knob
Connections - Terminals	Pillar terminals
Number Of Cables	2 cable(s) 2.5 mm²
Cable Stiffness	Flexible Rigid
Wire Stripping Length	8 mm
Conductor Material	Copper
Fixing Mode	Claws53...78 mm
Height	71 mm
Width	71 mm
Depth	50 mm
Projecting Depth	21 mm
Net Weight	0.099 kg

Disclaimer: This documentation is not intended as a substitute for and is not to be used for determining suitability or reliability of these products for specific user applications

# Environment

Product Certifications	SEMKO UKR TSE NEMKO GOST VDE FIMKO
Quality Labels	CE NF
Ip Degree Of Protection	IP20

# Packing Units

Unit Type Of Package 1	PCE
Number Of Units In Package 1	1
Package 1 Height	6.2 cm
Package 1 Width	7.1 cm
Package 1 Length	12.6 cm
Package 1 Weight	102 g
Unit Type Of Package 2	S02
Number Of Units In Package 2	24
Package 2 Height	15 cm
Package 2 Width	30 cm
Package 2 Length	40 cm
Package 2 Weight	2831 kg
Unit Type Of Package 3	P12
Number Of Units In Package 3	1536
Package 3 Height	128 cm
Package 3 Width	80 cm
Package 3 Length	120 cm
Package 3 Weight	181.18 kg

## Sustainability



**Green Premium™ label** is Schneider Electric's commitment to delivering products with best-in-class environmental performance. Green Premium promises compliance with the latest regulations, transparency on environmental impacts, as well as circular and low-CO<sub>2</sub> products.

**Guide to assessing product sustainability** is a white paper that clarifies global eco-label standards and how to interpret environmental declarations.

[Learn more about Green Premium >](#)

[Guide to assess a product's sustainability >](#)

## Well-being performance

 Mercury Free	
 Rohs Exemption Information	<a href="#">Yes</a>
Reach Regulation	<a href="#">REACH Declaration</a>
Eu Rohs Directive	Compliant with Exemptions
China Rohs Regulation	<a href="#">China RoHS declaration</a> Product out of China RoHS scope. Substance declaration for your information
Weee	The product must be disposed on European Union markets following specific waste collection and never end up in rubbish bins