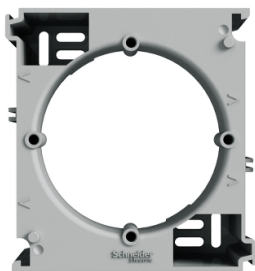


Product data sheet

Specifications



Extension multi-gang surface-mounted box, aluminium

EPH6100261

 **Discontinued on:** Jun 30, 2023

 **Discontinued**

Main

Range Of Product	Asfora
Product Or Component Type	Extention box
Type Of Packing	Flow-pack

Complementary

Device Mounting	Surface
Material	ABS (acrylonitrile butadiene-styrene): box
Surface Finish	Painted

Environment

Ip Degree Of Protection	IP20
-------------------------	------

Packing Units

Unit Type Of Package 1	PCE
Number Of Units In Package 1	1
Package 1 Height	4.000 cm
Package 1 Width	7.500 cm
Package 1 Length	8.000 cm
Package 1 Weight	46.800 g
Unit Type Of Package 2	BB1
Number Of Units In Package 2	8
Package 2 Height	9.500 cm
Package 2 Width	18.500 cm
Package 2 Length	27.500 cm
Package 2 Weight	453.000 g
Unit Type Of Package 3	S04
Number Of Units In Package 3	96
Package 3 Height	30.000 cm
Package 3 Width	40.000 cm
Package 3 Length	60.000 cm
Package 3 Weight	5.983 kg

Disclaimer: This documentation is not intended as a substitute for and is not to be used for determining suitability or reliability of these products for specific user applications

Sustainability

Green Premium™ label is Schneider Electric's commitment to delivering products with best-in-class environmental performance. Green Premium promises compliance with the latest regulations, transparency on environmental impacts, as well as circular and low-CO₂ products.

Guide to assessing product sustainability is a white paper that clarifies global eco-label standards and how to interpret environmental declarations.


[Learn more about Green Premium >](#)

[Guide to assess a product's sustainability >](#)



Transparency RoHS/REACH

Well-being performance

 Rohs Exemption Information [Yes](#)

Certifications & Standards

Reach Regulation	REACH Declaration
Eu Rohs Directive	Pro-active compliance (Product out of EU RoHS legal scope) EU RoHS Declaration
China Rohs Regulation	China RoHS declaration Pro-active China RoHS declaration (out of China RoHS legal scope)
Environmental Disclosure	Product Environmental Profile
Circularity Profile	No need of specific recycling operations