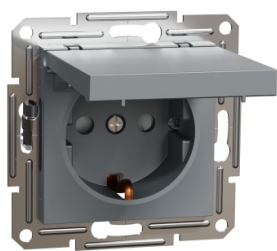


# Product data sheet

Specifications



## Asfora - single socket outlet with side earth with lid, wo frame, steel

EPH3100162

### Main

Range	Asfora
Product Or Component Type	Socket-outlet
Socket Number	1
Outlet Poles Configuration	2P + E
Socket Additional Information	Lid
Colour Tint	Steel
Type Of Packing	Flow-pack

### Complementary

Device Presentation	Mechanism with fixing frame
Device Mounting	Flush
Fixing Mode	Screws or claws51...69 mm
Outlet Standard	CEE 7/3
Outlet Standard	Schuko
Outlet Standard Description	Side earth
Power Range	3680 W
Rated Current	16 A at 250 V AC
Surface Finish	Painted
Material	ABS + PC: central plate ABS (acrylonitrile butadiene-styrene): lid
Wire Stripping Length	13.0 mm
Conductor Material	Copper
Connections - Terminals	Lift terminals
Number Of Cables	2 cable(s) 2.5 mm²
Cable Stiffness	Flexible Rigid Solid stranded
Quantity Per Set	1
Ip Degree Of Protection	IP20
Projecting Depth	10 mm
Width	71 mm
Height	71 mm
Depth	42 mm

Disclaimer: This documentation is not intended as a substitute for and is not to be used for determining suitability or reliability of these products for specific user applications

Net Weight	0.073 kg
------------	----------

## Environment

Standards	IEC 60884-1
Product Certifications	TSE VDE

## Packing Units

Unit Type Of Package 1	PCE
Number Of Units In Package 1	1
Package 1 Height	4.500 cm
Package 1 Width	7.000 cm
Package 1 Length	7.000 cm
Package 1 Weight	73.800 g
Unit Type Of Package 2	BB1
Number Of Units In Package 2	10
Package 2 Height	9.500 cm
Package 2 Width	18.500 cm
Package 2 Length	27.500 cm
Package 2 Weight	817.000 g
Unit Type Of Package 3	S04
Number Of Units In Package 3	120
Package 3 Height	30.000 cm
Package 3 Width	40.000 cm
Package 3 Length	60.000 cm
Package 3 Weight	10.369 kg

## Sustainability

**Green Premium™ label** is Schneider Electric's commitment to delivering products with best-in-class environmental performance. Green Premium promises compliance with the latest regulations, transparency on environmental impacts, as well as circular and low-CO<sub>2</sub> products.

**Guide to assessing product sustainability** is a white paper that clarifies global eco-label standards and how to interpret environmental declarations.

[Learn more about Green Premium >](#)

[Guide to assess a product's sustainability >](#)



RoHS/REACH

## Well-being performance

✓ Toxic Heavy Metal Free

✓ Mercury Free

✓ Rohs Exemption Information [Yes](#)

## Certifications & Standards

Reach Regulation	<a href="#">REACH Declaration</a>
Eu Rohs Directive	Compliant <a href="#">EU RoHS Declaration</a>
China Rohs Regulation	<a href="#">China RoHS declaration</a> Pro-active China RoHS declaration (out of China RoHS legal scope)
Weee	The product must be disposed on European Union markets following specific waste collection and never end up in rubbish bins
Circularity Profile	<a href="#">End of Life Information</a>