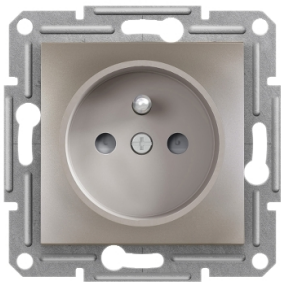


Product data sheet

Specifications



Asfora - single socket outlet with pin earth with shutters, wo frame, bronze

EPH2800269

Main

Range	Asfora
Product Or Component Type	Socket-outlet
Socket Number	1
Outlet Poles Configuration	2P + E
Socket Additional Information	Shuttered
Colour Tint	Bronze
Type Of Packing	Flow-pack

Complementary

Device Presentation	Mechanism with fixing frame
Device Mounting	Flush
Fixing Mode	Screws or claws51...69 mm
Outlet Standard	CEE 7/5
Outlet Standard	French
Outlet Standard Description	Pin earth
Power Range	3680 W
Rated Current	16 A at 250 V AC
Surface Finish	Painted
Material	ABS + PC: central plate
Wire Stripping Length	13.0 mm
Conductor Material	Copper
Connections - Terminals	Lift terminals
Number Of Cables	2 cable(s) 2.5 mm²
Cable Stiffness	Flexible Rigid Solid stranded
Quantity Per Set	1
Ip Degree Of Protection	IP20
Projecting Depth	10 mm
Width	71 mm
Height	71 mm
Depth	42 mm

Disclaimer: This documentation is not intended as a substitute for and is not to be used for determining suitability or reliability of these products for specific user applications

Net Weight	0.069 kg
------------	----------

Environment

Standards	IEC 60884-1
Product Certifications	SEP-BBJ TSE

Packing Units

Unit Type Of Package 1	PCE
Number Of Units In Package 1	1
Package 1 Height	7.1 cm
Package 1 Width	7.1 cm
Package 1 Length	4.2 cm
Package 1 Weight	83 g
Unit Type Of Package 2	BB1
Number Of Units In Package 2	10
Package 2 Height	9.4 cm
Package 2 Width	18.5 cm
Package 2 Length	27.5 cm
Package 2 Weight	930 kg
Unit Type Of Package 3	S04
Number Of Units In Package 3	120
Package 3 Height	30 cm
Package 3 Width	40 cm
Package 3 Length	60 cm
Package 3 Weight	12312 kg

Sustainability

Green Premium™ label is Schneider Electric's commitment to delivering products with best-in-class environmental performance. Green Premium promises compliance with the latest regulations, transparency on environmental impacts, as well as circular and low-CO₂ products.

Guide to assessing product sustainability is a white paper that clarifies global eco-label standards and how to interpret environmental declarations.

[Learn more about Green Premium >](#)

[Guide to assess a product's sustainability >](#)



Transparency RoHS/REACH

Well-being performance

✓ Mercury Free

✓ Rohs Exemption Information [Yes](#)

Certifications & Standards

Reach Regulation	REACH Declaration
Eu Rohs Directive	Compliant with Exemptions
China Rohs Regulation	China RoHS declaration Product out of China RoHS scope. Substance declaration for your information
Environmental Disclosure	Product Environmental Profile
Weee	The product must be disposed on European Union markets following specific waste collection and never end up in rubbish bins
Circularity Profile	No need of specific recycling operations