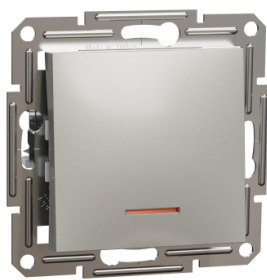


Product data sheet

Specifications



Asfora 1pole 2way switch 10AX with locator light screwless wo frame bronze

EPH1500169

 **Discontinued on:** Jun 30, 2023

 **Discontinued**

Main

Range	Asfora
Product Or Component Type	Switch
Device Presentation	Mechanism with fixing frame
Number Of Rocker	1
Switch Function	1-pole 2-way
Load Type	Load for energy saving lamps with ballast: 100 W
Colour Tint	Bronze
Type Of Packing	Flow-pack

Complementary

Device Mounting	Flush
Local Signalling	LED
Power Range	2300 W
Rated Current	10 AX at 250 V AC
Number Of Cables	2 cable(s) 2.5 mm ²
Cable Stiffness	Flexible Rigid Solid stranded
Wire Stripping Length	13.0 mm
Material	ABS (acrylonitrile butadiene-styrene)
Surface Finish	Painted
Conductor Material	Copper
Fixing Mode	Screws or claws51...70 mm
Connections - Terminals	Screwless terminals
Width	71 mm
Height	71 mm
Depth	43.0 mm
Projecting Depth	15 mm
Net Weight	0.06205 kg

Environment

Disclaimer: This documentation is not intended as a substitute for and is not to be used for determining suitability or reliability of these products for specific user applications

Standards	IEC 60669-1
Product Certifications	TSE VDE NF
Quality Labels	CE UKR
Ip Degree Of Protection	IP20
Ambient Air Temperature For Operation	-5...40 °C

Packing Units

Unit Type Of Package 1	PCE
Number Of Units In Package 1	1
Package 1 Height	4.500 cm
Package 1 Width	7.000 cm
Package 1 Length	7.000 cm
Package 1 Weight	62.000 g
Unit Type Of Package 2	BB1
Number Of Units In Package 2	10
Package 2 Height	9.500 cm
Package 2 Width	18.500 cm
Package 2 Length	27.500 cm
Package 2 Weight	681.000 g
Unit Type Of Package 3	S04
Number Of Units In Package 3	120
Package 3 Height	30.000 cm
Package 3 Width	40.000 cm
Package 3 Length	60.000 cm
Package 3 Weight	8.740 kg

Sustainability

Green Premium™ label is Schneider Electric's commitment to delivering products with best-in-class environmental performance. Green Premium promises compliance with the latest regulations, transparency on environmental impacts, as well as circular and low-CO₂ products.

Guide to assessing product sustainability is a white paper that clarifies global eco-label standards and how to interpret environmental declarations.

[Learn more about Green Premium >](#)

[Guide to assess a product's sustainability >](#)



Transparency RoHS/REACH

Well-being performance

Rohs Exemption Information [Yes](#)

Certifications & Standards

Reach Regulation	REACH Declaration
Eu Rohs Directive	Compliant EU RoHS Declaration
China Rohs Regulation	China RoHS declaration Pro-active China RoHS declaration (out of China RoHS legal scope)
Environmental Disclosure	Product Environmental Profile
Weee	The product must be disposed on European Union markets following specific waste collection and never end up in rubbish bins
Circularity Profile	No need of specific recycling operations