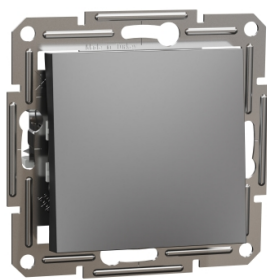


# Product data sheet

Specifications



## Asfora - 1pole 2way switch, screwless terminals, wo frame, anthracite

EPH0400171

### Main

Range	Asfora
Product Or Component Type	Switch
Device Presentation	Mechanism with fixing frame
Number Of Rocker	1.0
Switch Function	1-pole 2-way
Load Type	Load for energy saving lamps with ballast: 100 W
Colour Tint	Anthracite
Type Of Packing	Flow-pack

### Complementary

Device Mounting	Flush
Power Range	2300 W
Rated Current	10 AX at 250 V AC
Number Of Cables	2 cable(s) 2.5 mm²
Cable Stiffness	Flexible Rigid Solid stranded
Wire Stripping Length	13.0 mm
Material	ABS (acrylonitrile butadiene-styrene)
Surface Finish	Painted
Conductor Material	Copper
Fixing Mode	Screws or claws51...70 mm
Connections - Terminals	Screwless terminals
Width	71 mm
Height	71 mm
Depth	43.0 mm
Projecting Depth	15 mm
Net Weight	0.05975 kg

### Environment

Standards	IEC 60669-1
-----------	-------------

Disclaimer: This documentation is not intended as a substitute for and is not to be used for determining suitability or reliability of these products for specific user applications

Product Certifications	TSE VDE NF
Quality Labels	CE UKR
Ip Degree Of Protection	IP20
Ambient Air Temperature For Operation	-5...40 °C

## Packing Units

Unit Type Of Package 1	PCE
Number Of Units In Package 1	1
Package 1 Height	4.000 cm
Package 1 Width	8.000 cm
Package 1 Length	8.000 cm
Package 1 Weight	59.200 g
Unit Type Of Package 2	BB1
Number Of Units In Package 2	10
Package 2 Height	9.500 cm
Package 2 Width	18.500 cm
Package 2 Length	27.500 cm
Package 2 Weight	666.000 g
Unit Type Of Package 3	S04
Number Of Units In Package 3	120
Package 3 Height	30.000 cm
Package 3 Width	40.000 cm
Package 3 Length	60.000 cm
Package 3 Weight	8.529 kg

# Sustainability

**Green Premium™ label** is Schneider Electric’s commitment to delivering products with best-in-class environmental performance. Green Premium promises compliance with the latest regulations, transparency on environmental impacts, as well as circular and low-CO<sub>2</sub> products.

**Guide to assessing product sustainability** is a white paper that clarifies global eco-label standards and how to interpret environmental declarations.

[Learn more about Green Premium >](#)

[Guide to assess a product’s sustainability >](#)



Transparency   RoHS/REACH

## Well-being performance

Rohs Exemption Information   [Yes](#)

## Certifications & Standards

Reach Regulation	<a href="#">REACH Declaration</a>
Eu Rohs Directive	Compliant <a href="#">EU RoHS Declaration</a>
China Rohs Regulation	<a href="#">China RoHS declaration</a> Pro-active China RoHS declaration (out of China RoHS legal scope)
Environmental Disclosure	<a href="#">Product Environmental Profile</a>
Weee	The product must be disposed on European Union markets following specific waste collection and never end up in rubbish bins
Circularity Profile	No need of specific recycling operations