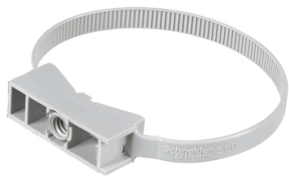


Product data sheet

Specifications



Mureva FIX - instacable for Ø40-63 mm conduits

ENN47960

Main

Range Of Product	Mureva
Product Or Component Type	Conduit support
Colour	Grey (RAL 7035)
Quantity Per Package	100 pieces

Complementary

Accessory / Separate Part Category	Installation accessory
Condition Of Use	Indoor
Tube Diameter	40...63 mm
Material	PA (polyamide) 6/6
Fixing Mode	By screw By Murafix plug
Net Weight	0.007 kg

Environment

Operating Temperature	-40...85 °C
-----------------------	-------------

Packing Units

Unit Type Of Package 1	PCE
Number Of Units In Package 1	1
Package 1 Height	1.3 cm
Package 1 Width	1.8 cm
Package 1 Length	28.3 cm
Package 1 Weight	5.8 g
Unit Type Of Package 2	BB1
Number Of Units In Package 2	100
Package 2 Height	14.5 cm
Package 2 Width	14.5 cm
Package 2 Length	35 cm
Package 2 Weight	683 g
Unit Type Of Package 3	CAR
Number Of Units In Package 3	800

Disclaimer: This documentation is not intended as a substitute for and is not to be used for determining suitability or reliability of these products for specific user applications

Package 3 Height	40 cm
Package 3 Width	40 cm
Package 3 Length	60 cm
Package 3 Weight	6.226 kg

Contractual warranty

Warranty	18 months
----------	-----------

Sustainability

Green Premium™ label is Schneider Electric's commitment to delivering products with best-in-class environmental performance. Green Premium promises compliance with the latest regulations, transparency on environmental impacts, as well as circular and low-CO₂ products.

Guide to assessing product sustainability is a white paper that clarifies global eco-label standards and how to interpret environmental declarations.

[Learn more about Green Premium >](#)

[Guide to assess a product's sustainability >](#)



Transparency RoHS/REACH

Well-being performance

✓ Reach Free Of Svhc

✓ Toxic Heavy Metal Free

✓ Mercury Free

✓ Rohs Exemption Information Yes

Certifications & Standards

Reach Regulation	REACH Declaration
Eu Rohs Directive	Pro-active compliance (Product out of EU RoHS legal scope) EU RoHS Declaration
China Rohs Regulation	China RoHS declaration Pro-active China RoHS declaration (out of China RoHS legal scope)
Environmental Disclosure	Product Environmental Profile
Circularity Profile	No need of specific recycling operations