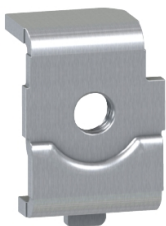


Product data sheet

Specifications



1/4 TURN SLIDING NUTS(SOLD IN MULT.OF 10

DZ5ME5

Main

Accessory / Separate Part Category	Mounting accessories
Quantity Per Set	Set of 100

Complementary

Iso Thread	M6
Mounting Support	Asymmetrical DZ5-MB rail
Net Weight	0.009 kg
Type Of Nut	1/4 turn, sliding

Packing Units

Unit Type Of Package 1	PCE
Number Of Units In Package 1	1
Package 1 Height	1 cm
Package 1 Width	2 cm
Package 1 Length	2.5 cm
Package 1 Weight	9 g
Unit Type Of Package 2	BB1
Number Of Units In Package 2	100
Package 2 Height	5 cm
Package 2 Width	10.5 cm
Package 2 Length	16 cm
Package 2 Weight	918 g
Unit Type Of Package 3	CAR
Number Of Units In Package 3	1000
Package 3 Height	39 cm
Package 3 Width	29 cm
Package 3 Length	15 cm
Package 3 Weight	9.568 kg

Contractual warranty

Warranty	18 months
----------	-----------

Disclaimer: This documentation is not intended as a substitute for and is not to be used for determining suitability or reliability of these products for specific user applications

Sustainability

Green Premium™ label is Schneider Electric's commitment to delivering products with best-in-class environmental performance. Green Premium promises compliance with the latest regulations, transparency on environmental impacts, as well as circular and low-CO₂ products.

Guide to assessing product sustainability is a white paper that clarifies global eco-label standards and how to interpret environmental declarations.

[Learn more about Green Premium >](#)

[Guide to assess a product's sustainability >](#)

Well-being performance

✓	Reach Free Of Svhc	
✓	Toxic Heavy Metal Free	
✓	Mercury Free	
✓	Rohs Exemption Information	Yes
Reach Regulation		REACH Declaration
Eu Rohs Directive		Pro-active compliance (Product out of EU RoHS legal scope) EU RoHS Declaration
China Rohs Regulation		China RoHS declaration Pro-active China RoHS declaration (out of China RoHS legal scope)