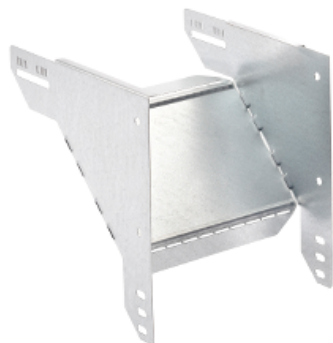


Product data sheet

Characteristics

CSU86154006

Stago - T-piece - 60x400 mm - sheet steel - zinc+
- T=1.5 mm



Main

Product or component type	T-piece
---------------------------	---------

Complementary

Operating angle	90 °
Direction change type	Horizontal
Adjustment	Fixed
Product destination	Cable tray KB184 Zinc+ height 60 mm width 400 mm
Fixing mode	By screw
Material	Sheet steel with zinc+
Thickness	1.5 mm
Height	60 mm
Width	576 mm
Depth	750 mm

Disclaimer: This documentation is not intended as a substitute for and is not to be used for determining suitability or reliability of these products for specific user applications