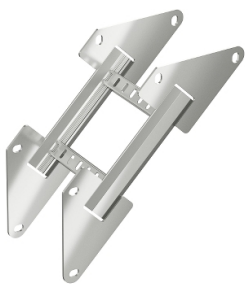


# Product data sheet

Specifications



## Wibe - riser coupling 20C-200 - steel hot-dip galvanized

CSU795159

 **Discontinued on:** Jan 3, 2022

 **Discontinued**

**Important message:** This product belongs to Cable Support which is no longer commercialized by Schneider Electric. As per the first of January 2022 the commercialization is managed by Wibe-Group, Please follow the link [www.wibe-group.com](http://www.wibe-group.com) for further details.

### Main

Range	Wibe
Product Or Component Type	Riser coupling
Range Compatibility	Wibe

### Complementary

Material With Surface Treatment	Steel, hot-dip galvanized
Corrosion Class	C3/C4
Height	170 mm
Width	200 mm
Depth	550 mm
Net Weight	300 kg / set of 100

### Environment

Mounting Location	Area with high level of environmental corrosion, humidity and airborne pollution industrial and coastal areas, chemical plants
Standards	NEMA 20C

### Packing Units

Unit Type Of Package 1	PCE
Number Of Units In Package 1	1
Package 1 Height	17 cm
Package 1 Width	20 cm
Package 1 Length	55 cm
Package 1 Weight	2.489 kg

Disclaimer: This documentation is not intended as a substitute for and is not to be used for determining suitability or reliability of these products for specific user applications