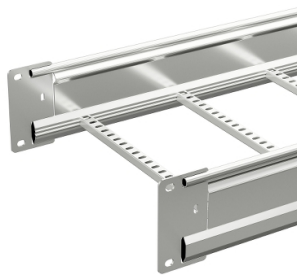


Product data sheet

Specifications



Wibe - reinforced cable ladder - KHZP 20C-600 - steel hot-dip galvanized - 6 m

CSU795142

 **Discontinued on:** Jan 3, 2022

 **Discontinued**

Important message: This product belongs to Cable Support which is no longer commercialized by Schneider Electric. As per the first of January 2022 the commercialization is managed by Wibe-Group, Please follow the link www.wibe-group.com for further details.

Main

Range	Wibe
Product Name	Wibe Cable Ladders
Product Or Component Type	Reinforced cable ladder
Device Short Name	KHZP 20C
Device Application	Industrial application

Complementary

Type Of Side Profile	Closed profile
Type Of Rung	Perforated profile
Mounting Location	Outdoor Indoor
Rung Spacing	250 mm
Material With Surface Treatment	Steel, hot-dip galvanized
Corrosion Class	C3/C4
Height	190 mm
Width	600 mm
Length	6 m
Net Weight	100 kg / 100 m

Environment

Mounting Location	Area with high level of environmental corrosion, humidity and airborne pollution industrial and coastal areas, chemical plants
Standards	NEMA 20C IEC 61537

Packing Units

Unit Type Of Package 1	PCE
Number Of Units In Package 1	1
Package 1 Height	19 cm
Package 1 Width	60 cm

Disclaimer: This documentation is not intended as a substitute for and is not to be used for determining suitability or reliability of these products for specific user applications

Package 1 Length	605 cm
Package 1 Weight	60 kg

Sustainability

Green Premium™ label is Schneider Electric’s commitment to delivering products with best-in-class environmental performance. Green Premium promises compliance with the latest regulations, transparency on environmental impacts, as well as circular and low-CO₂ products.

Guide to assessing product sustainability is a white paper that clarifies global eco-label standards and how to interpret environmental declarations.

[Learn more about Green Premium >](#)

[Guide to assess a product’s sustainability >](#)



Transparency

Eu Rohs Directive	Not applicable, out of EU RoHS legal scope
Environmental Disclosure	Product Environmental Profile
Circularity Profile	No need of specific recycling operations