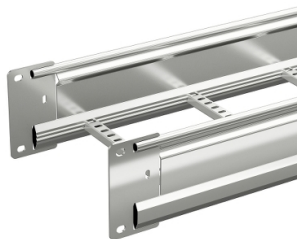


# Product data sheet

Specifications



## Wibe - reinforced cable ladder - KHZP 20C-400 - steel hot-dip galvanized - 6 m

CSU795140

 **Discontinued on:** Jan 3, 2022

 **Discontinued**

**Important message:** This product belongs to Cable Support which is no longer commercialized by Schneider Electric. As per the first of January 2022 the commercialization is managed by Wibe-Group, Please follow the link [www.wibe-group.com](http://www.wibe-group.com) for further details.

### Main

Range	Wibe
Product Name	Wibe Cable Ladders
Product Or Component Type	Reinforced cable ladder
Device Short Name	KHZP 20C
Device Application	Industrial application

### Complementary

Type Of Side Profile	Closed profile
Type Of Rung	Perforated profile
Mounting Location	Outdoor Indoor
Rung Spacing	250 mm
Material With Surface Treatment	Steel, hot-dip galvanized
Corrosion Class	C3/C4
Height	190 mm
Width	400 mm
Length	6 m
Net Weight	933 kg / 100 m

### Environment

Mounting Location	Area with high level of environmental corrosion, humidity and airborne pollution industrial and coastal areas, chemical plants
Standards	IEC 61537 NEMA 20C

### Packing Units

Unit Type Of Package 1	PCE
Number Of Units In Package 1	1
Package 1 Height	19 cm
Package 1 Width	40 cm

Disclaimer: This documentation is not intended as a substitute for and is not to be used for determining suitability or reliability of these products for specific user applications

Package 1 Length	605 cm
Package 1 Weight	56 kg