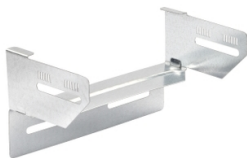


Product data sheet

Specifications



Stago - channel attachment flat 85x100mm pre-galvanized

CSU38511002

 **Discontinued on:** Jan 3, 2022

 **Discontinued**

Important message: This product belongs to Cable Support which is no longer commercialized by Schneider Electric. As per the first of January 2022 the commercialization is managed by Wibe-Group, Please follow the link www.wibe-group.com for further details.

Main

Range Of Product	Stago
Product Or Component Type	Channel attachment
Mounting Location	Partly outdoor environment with low exposure to corrosion ware-houses and parking garages

Complementary

Operating Angle	90 °
Direction Change Type	Horizontal
Adjustment	Foldable
Product Destination	Cable tray KB184 H= 85 mm W= 100 mm
Fixing Mode	By screw
Material With Surface Treatment	Steel pre-galvanized
Corrosion Class	C2

Disclaimer: This documentation is not intended as a substitute for and is not to be used for determining suitability or reliability of these products for specific user applications