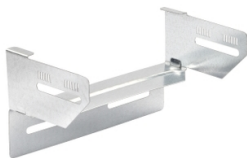


Product data sheet

Specifications



Stago - channel attachment flat 60x250mm pre-galvanized RAL9016

CSU3651252916

⚠ Discontinued on: Feb 22, 2017

⚠ Discontinued

Main

Range Of Product	Stago
Product Or Component Type	Channel attachment
Mounting Location	Partly outdoor environment with low exposure to corrosion ware-houses and parking garages

Complementary

Operating Angle	90 °
Direction Change Type	Horizontal
Adjustment	Foldable
Product Destination	Cable tray KG281 H= 60 mm W= 250 mm
Fixing Mode	Screwless
Material With Surface Treatment	Steel pre-galvanized, RAL 9016
Corrosion Class	C2
Net Weight	0.209 kg

Disclaimer: This documentation is not intended as a substitute for and is not to be used for determining suitability or reliability of these products for specific user applications