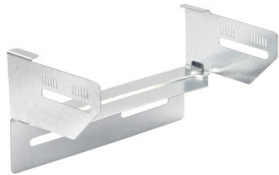


# Product data sheet

Specifications



## Stago - channel attachment flat 60x100mm pre-galvanized

CSU36511002

⚠ Discontinued on: Jan 3, 2022

⚠ Discontinued

**Important message:** This product belongs to Cable Support which is no longer commercialized by Schneider Electric. As per the first of January 2022 the commercialization is managed by Wibe-Group, Please follow the link [www.wibe-group.com](http://www.wibe-group.com) for further details.

### Main

Range Of Product	Stago
Product Or Component Type	Channel attachment
Mounting Location	Partly outdoor environment with low exposure to corrosion ware-houses and parking garages

### Complementary

Operating Angle	90 °
Direction Change Type	Horizontal
Adjustment	Foldable
Product Destination	Cable tray KB184 H= 60 mm W= 100 mm Cable tray KB284 H= 60 mm W= 100 mm
Fixing Mode	Screwless
Material With Surface Treatment	Steel pre-galvanized
Corrosion Class	C2
Net Weight	0.112 kg

### Packing Units

Unit Type Of Package 1	PCE
Number Of Units In Package 1	1
Package 1 Height	5.1 cm
Package 1 Width	10 cm
Package 1 Length	6 cm
Package 1 Weight	350 g

Disclaimer: This documentation is not intended as a substitute for and is not to be used for determining suitability or reliability of these products for specific user applications

## Sustainability

**Green Premium™ label** is Schneider Electric's commitment to delivering products with best-in-class environmental performance. Green Premium promises compliance with the latest regulations, transparency on environmental impacts, as well as circular and low-CO<sub>2</sub> products.

**Guide to assessing product sustainability** is a white paper that clarifies global eco-label standards and how to interpret environmental declarations.

[Learn more about Green Premium >](#)

[Guide to assess a product's sustainability >](#)



Transparency   RoHS/REACH

## Well-being performance

✓ Reach Free Of Svhc

✓ Toxic Heavy Metal Free

✓ Mercury Free

✓ Rohs Exemption Information   Yes

## Certifications & Standards

Reach Regulation	<a href="#">REACH Declaration</a>
Eu Rohs Directive	Pro-active compliance (Product out of EU RoHS legal scope) <a href="#">EU RoHS Declaration</a>
China Rohs Regulation	<a href="#">China RoHS declaration</a> Pro-active China RoHS declaration (out of China RoHS legal scope)
Environmental Disclosure	<a href="#">Product Environmental Profile</a>
Circularity Profile	No need of specific recycling operations