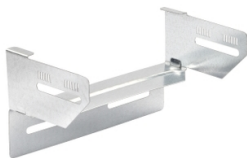


# Product data sheet

Specifications



## Stago - channel attachment flat 110x200mm pre-galvanized

CSU31512002

 **Discontinued on:** Jan 3, 2022

 **Discontinued**

**Important message:** This product belongs to Cable Support which is no longer commercialized by Schneider Electric. As per the first of January 2022 the commercialization is managed by Wibe-Group, Please follow the link [www.wibe-group.com](http://www.wibe-group.com) for further details.

### Main

Range Of Product	Stago
Product Or Component Type	Channel attachment
Mounting Location	Area with high level of environmental corrosion, humidity and airborne pollution industrial and coastal areas, chemical plants

### Complementary

Operating Angle	90 °
Direction Change Type	Horizontal
Adjustment	Foldable
Product Destination	Cable tray KB184 H= 110 mm W= 200 mm
Fixing Mode	By screw
Material With Surface Treatment	Steel pre-galvanized
Corrosion Class	C3/C4

Disclaimer: This documentation is not intended as a substitute for and is not to be used for determining suitability or reliability of these products for specific user applications