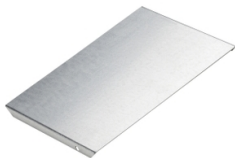


# Product data sheet

Specifications



## Stago - cover internal rising piece flat 500mm pre-galvanized

CSU30225002

 **Discontinued on:** Jan 3, 2022

 **Discontinued**

**Important message:** This product belongs to Cable Support which is no longer commercialized by Schneider Electric. As per the first of January 2022 the commercialization is managed by Wibe-Group, Please follow the link [www.wibe-group.com](http://www.wibe-group.com) for further details.

### Main

Range	Stago
Product Or Component Type	Cover
Mounting Location	Partly outdoor environment with low exposure to corrosion ware-houses and parking garages

### Complementary

Operating Angle	90 °
Direction Change Type	Vertical
Product Destination	Rising piece KG281 for cable tray 35 mm 500 mm width Rising piece KG281 for cable tray 60 mm 500 mm width Rising piece KG281 for cable tray 85 mm 500 mm width Rising piece KG281 for cable tray 110 mm 500 mm width Rising piece KB184 for cable tray 35 mm 500 mm width Rising piece KB184 for cable tray 60 mm 500 mm width Rising piece KB184 for cable tray 85 mm 500 mm width Rising piece KB184 for cable tray 110 mm 500 mm width Rising piece KB284 for cable tray 35 mm 500 mm width Rising piece KB284 for cable tray 60 mm 500 mm width Rising piece KB284 for cable tray 85 mm 500 mm width Rising piece KB284 for cable tray 110 mm 500 mm width
Fixing Mode	Screwless
Material With Surface Treatment	Steel pre-galvanized
Corrosion Class	C2
Length	128 mm
Net Weight	0.48 kg

### Packing Units

Unit Type Of Package 1	PCE
Number Of Units In Package 1	1
Package 1 Height	1 cm
Package 1 Width	14.8 cm
Package 1 Length	50 cm
Package 1 Weight	480 g

Disclaimer: This documentation is not intended as a substitute for and is not to be used for determining suitability or reliability of these products for specific user applications

## Sustainability

**Green Premium™ label** is Schneider Electric's commitment to delivering products with best-in-class environmental performance. Green Premium promises compliance with the latest regulations, transparency on environmental impacts, as well as circular and low-CO<sub>2</sub> products.

**Guide to assessing product sustainability** is a white paper that clarifies global eco-label standards and how to interpret environmental declarations.

[Learn more about Green Premium >](#)

[Guide to assess a product's sustainability >](#)



Transparency   RoHS/REACH

## Well-being performance

✓ Reach Free Of Svhc

✓ Toxic Heavy Metal Free

✓ Mercury Free

✓ Rohs Exemption Information   Yes

## Certifications & Standards

Reach Regulation	<a href="#">REACH Declaration</a>
Eu Rohs Directive	Pro-active compliance (Product out of EU RoHS legal scope) <a href="#">EU RoHS Declaration</a>
China Rohs Regulation	<a href="#">China RoHS declaration</a> Pro-active China RoHS declaration (out of China RoHS legal scope)
Environmental Disclosure	<a href="#">Product Environmental Profile</a>
Circularity Profile	No need of specific recycling operations