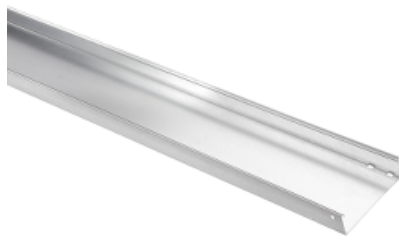


Product data sheet

Characteristics

CSU0860444916

Stago - KG281 tray closed 60x250mm L=3m 1mm
pre-galvanized RAL9016



Main

Range of product	Stago
Product or component type	Cable tray
Cable support type	Unperforated
Mounting location	Partly outdoor environment with low exposure to corrosion ware-houses and parking garages

Complementary

Product destination	KG281 cable tray
Fixing mode	Screwless
Material with surface treatment	Steel pre-galvanized, RAL 9016
Corrosion class	C2
Thickness	1 mm
Nominal cross section	15000 mm ²
Height	60 mm
Width	250 mm
Length	3000 mm
Net weight	3.147 kg / 100 m

Disclaimer: This documentation is not intended as a substitute for and is not to be used for determining suitability or reliability of these products for specific user applications