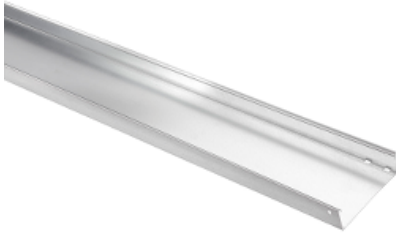


Product data sheet

Characteristics

CSU08601474

Stago - KG281 tray closed 60x70mm L=3m 1mm pre-galvanized RAL9010



Main

Range of product	Stago
Product or component type	Cable tray
Cable support type	Unperforated
Mounting location	For partly outdoor environment with low exposure to corrosion, such as ware-houses and parking garages

Complementary

Product destination	KG281 cable tray
Fixing mode	Screwless
Material with surface treatment	Steel, pre-galvanized (RAL 9010)
Corrosion class	C2
Thickness	1 mm
Perforation location	Side perforation
Nominal cross section	4200 mm ²
Height	60 mm
Width	70 mm
Length	3000 mm
Product weight	1.69 kg / 100 m

Offer Sustainability

RoHS (date code: YYWW)	Compliant - since 1101 - Schneider Electric declaration of conformity Schneider Electric declaration of conformity
REACH	Reference not containing SVHC above the threshold Reference not containing SVHC above the threshold
Product end of life instructions	Need no specific recycling operations

Disclaimer: This documentation is not intended as a substitute for and is not to be used for determining suitability or reliability of these products for specific user applications