

Product data sheet

Specifications



Cantilever axis, Lexium CAS, model range 4, profile size 60 x 60 mm, toothed belt, roller guide

CAS42BR

Main

Range Of Product	Lexium CAS
Product Or Component Type	Cantilever axis
Product Specific Application	For 1 direction
Load Position	On the side of the profile or on the 2 end plates
Drive Type	Toothed belt
Type Of Guide	Roller

Complementary

Operating Position	Vertical
Function Available	Different types of sensors for the limit switch function Increased corrosion resistance Anti-static toothed belt Protective cover strip for the axis inner parts Motor and gearbox mounting options
Operating Force	650 N for Fx 930 N for Fy 600 N for Fz
Maximum Speed	3 m/s
Acceleration	20 m/s ²
Max. Drive Torque	16 N.m
Max. Torque	<13 N.m for Mx <29 N.m for My <45 N.m for Mz
Min. ... Max. Stroke	125...600 mm
Repeat Accuracy	+/- 0.05 mm
Profile Dimension	84 x 75 mm
Service Life	15000 km

Packing Units

Unit Type Of Package 1	PCE
Number Of Units In Package 1	1

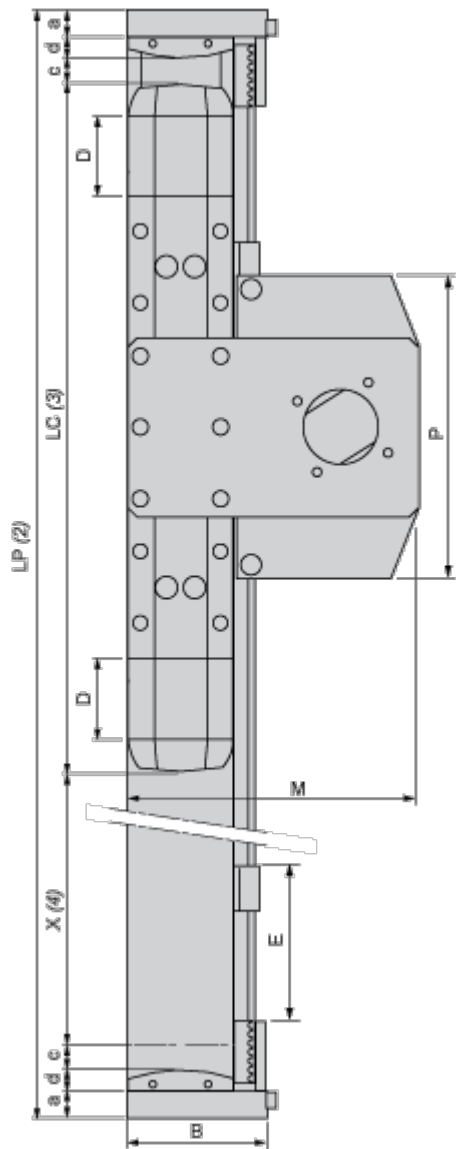
Contractual warranty

Warranty	18 months
----------	-----------

Disclaimer: This documentation is not intended as a substitute for and is not to be used for determining suitability or reliability of these products for specific user applications

Dimensions Drawings

Size Characteristics



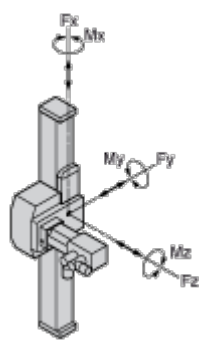
- (2) LP: total length of axis
- (3) LC: length of drive element
- (4) X: stroke, depending on application

		Without protective metal strip	With protective metal strip
a	mm	15	15
	in.	0.59	0.59
B	mm	78	78
	in.	3.07	3.07
c	mm	15	15

		Without protective metal strip	With protective metal strip
	in.	0.59	0.59
d	mm	–	11.5
	in.	–	0.45
D	mm	–	48.5
	in.	–	1.91
E	mm	85	145
	in.	3.35	5.71
LC	mm	296	393
	in.	11.65	15.47
LP	mm	= 356 + X	= 476 + X
	in.	= 14.02 + X	= 18.74 + X
M	mm	163.5	163.5
	in.	6.44	6.44
P	mm	170	170
	in.	6.69	6.69

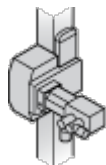
Technical Description

Forces and Torques Exerted on the Lexium CAS 4 Cantilever Axis

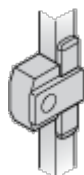


Types of Interface for the Drive Element

Drive Element Fixed on Right-Hand Side

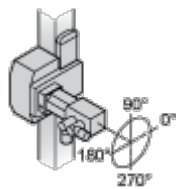


Axis with no Drive

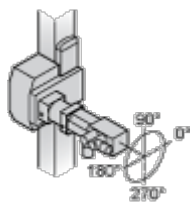


Possible Motor Drive Configurations and Orientations

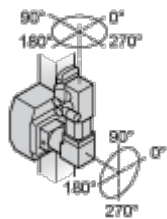
Motor only without Gearbox



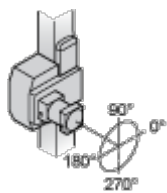
Motor with Planetary Gearbox



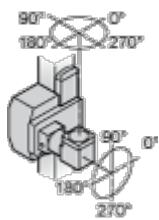
Motor with Angular Planetary Gearbox



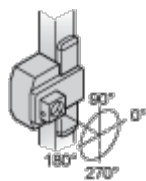
Planetary Gearbox Only



Angular Planetary Gearbox Only



Without Motor / Without Gearbox / With Adaptor Plate for the Drive Element



Without Motor / Without Gearbox

