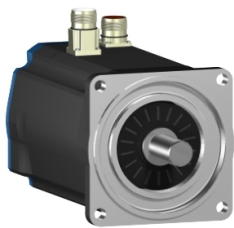


Product data sheet

Specifications



AC servo motor BSH, Lexium 05, 19.5N.m, 1500rpm, untapped shaft, with brake, IP50

BSH1402M01F1A

ⓘ Discontinued

Main

Product Or Component Type	Servo motor
Device Short Name	BSH
Maximum Mechanical Speed	4000 rpm
Continuous Stall Torque	19.5 N.m for LXM15MD40N4, 400 V, three phase 19.5 N.m for LXM15MD40N4, 480 V, three phase 19.2 N.m for LXM05AD34N4, 380...480 V, three phase 19.2 N.m for LXM05BD34N4, 380...480 V, three phase 19.2 N.m for LXM05CD34N4, 380...480 V, three phase
Peak Stall Torque	47.5 N.m for LXM15MD40N4, 400 V, three phase 47.5 N.m for LXM15MD40N4, 480 V, three phase 47.5 N.m for LXM05AD34N4, 380...480 V, three phase 47.5 N.m for LXM05BD34N4, 380...480 V, three phase 47.5 N.m for LXM05CD34N4, 380...480 V, three phase
Nominal Output Power	2350 W for LXM05AD34N4, 380...480 V, three phase 2350 W for LXM05BD34N4, 380...480 V, three phase 2350 W for LXM05CD34N4, 380...480 V, three phase 2350 W for LXM15MD40N4, 400 V, three phase 2350 W for LXM15MD40N4, 480 V, three phase
Nominal Torque	15 N.m for LXM05AD34N4, 380...480 V, three phase 15 N.m for LXM05BD34N4, 380...480 V, three phase 15 N.m for LXM05CD34N4, 380...480 V, three phase 15 N.m for LXM15MD40N4, 400 V, three phase 15 N.m for LXM15MD40N4, 480 V, three phase
Nominal Speed	1500 rpm for LXM15MD40N4, 400 V, three phase 1500 rpm for LXM05AD34N4, 380...480 V, three phase 1500 rpm for LXM05BD34N4, 380...480 V, three phase 1500 rpm for LXM05CD34N4, 380...480 V, three phase 1500 rpm for LXM15MD40N4, 480 V, three phase
Product Compatibility	LXM05AD34N4 at 380...480 V three phase LXM05BD34N4 at 380...480 V three phase LXM05CD34N4 at 380...480 V three phase LXM15MD40N4 at 400 V three phase LXM15MD40N4 at 480 V three phase
Shaft End	Untapped
Ip Degree Of Protection	IP50 standard
Speed Feedback Resolution	131072 points/turn
Holding Brake	With
Mounting Support	International standard flange
Electrical Connection	Straight connectors

Complementary

Disclaimer: This documentation is not intended as a substitute for and is not to be used for determining suitability or reliability of these products for specific user applications

Range Compatibility	Lexium 05 Lexium 15
Supply Voltage Max	480 V
Network Number Of Phases	Three phase
Continuous Stall Current	6.7 A
Maximum Continuous Power	5.5 W
Maximum Current Irms	22.4 A for LXM15MD40N4 22.4 A for LXM05AD34N4 22.4 A for LXM05BD34N4 22.4 A for LXM05CD34N4
Maximum Permanent Current	22.4 A
Switching Frequency	4 kHz
Second Shaft	Without second shaft end
Shaft Diameter	24 mm
Shaft Length	50 mm
Feedback Type	Single turn SinCos Hiperface
Holding Torque	23 N.m holding brake
Motor Flange Size	140 mm
Torque Constant	2.91 N.m/A at 120 °C
Back Emf Constant	199 V/krpm at 120 °C
Number Of Motor Poles	10
Rotor Inertia	13.83 kg.cm²
Stator Resistance	2.3 Ohm at 20 °C 2.32 Ohm at 20 °C
Stator Inductance	28.6 mH at 20 °C 29.79 mH at 20 °C
Stator Electrical Time Constant	12.33 ms at 20 °C 12.85 ms at 20 °C
Maximum Radial Force Fr	1680 N at 3000 rpm 1930 N at 2000 rpm 2430 N at 1000 rpm
Maximum Axial Force Fa	0.2 x Fr
Brake Pull-In Power	24 W
Type Of Cooling	Natural convection
Length	310.5 mm
Centring Collar Diameter	130 mm
Centring Collar Depth	3.5 mm
Number Of Mounting Holes	4
Mounting Holes Diameter	11 mm
Circle Diameter Of The Mounting Holes	165 mm
Net Weight	17.7 kg

Packing Units

Unit Type Of Package 1	PCE
Number Of Units In Package 1	1

Contractual warranty

Warranty	18 months
----------	-----------

Sustainability

Green Premium™ label is Schneider Electric's commitment to delivering products with best-in-class environmental performance. Green Premium promises compliance with the latest regulations, transparency on environmental impacts, as well as circular and low-CO₂ products.

Guide to assessing product sustainability is a white paper that clarifies global eco-label standards and how to interpret environmental declarations.

[Learn more about Green Premium >](#)

[Guide to assess a product's sustainability >](#)



Transparency RoHS/REACH

Well-being performance

✓ Mercury Free

✓ Rohs Exemption Information [Yes](#)

✓ Pvc Free

Certifications & Standards

Reach Regulation	REACH Declaration
Eu Rohs Directive	Pro-active compliance (Product out of EU RoHS legal scope)
China Rohs Regulation	China RoHS declaration
Environmental Disclosure	Product Environmental Profile
Weee	The product must be disposed on European Union markets following specific waste collection and never end up in rubbish bins
Circularity Profile	No need of specific recycling operations
California Proposition 65	WARNING: This product can expose you to chemicals including: Lead and lead compounds, which is known to the State of California to cause cancer and birth defects or other reproductive harm. For more information go to www.P65Warnings.ca.gov