


Product data sheet

Specifications



connection sub-base ABE7 - for Twido modular base - 12 inputs 8 outputs

ABE7B20MPN20

 **Discontinued on:** Nov 24, 2020

 **Discontinued**

Main

Range Of Product	Modicon ABE7
Product Or Component Type	Passive discrete I/O sub-base
[Us] Rated Supply Voltage	24 V DC for controller side 24 V DC for sensor/controller side
Number Of Channels	20
Number Of Terminal Per Channel	2
Connections - Terminals	Screw type terminals, 1 x 0.09...1 x 1.5 mm ² (AWG 28...AWG 16) flexible with cable end Screw type terminals, 1 x 0.14...1 x 2.5 mm ² (AWG 26...AWG 12) solid Screw type terminals, 1 x 0.14...1 x 2.5 mm ² (AWG 26...AWG 14) flexible without cable end Screw type terminals, 2 x 0.09...2 x 0.75 mm ² (AWG 28...AWG 20) flexible with cable end Screw type terminals, 2 x 0.2...2 x 2.5 mm ² (AWG 28...AWG 16) solid
Connector Destination	Twido programmable controller

Complementary

Supply Voltage Limits	19...30 V DC (controller side) conforming to IEC 61131-2 20.4...26.4 V DC (sensor/controller side) conforming to IEC 61131-2
Discrete Input Number	12
Discrete Input Logic	Sink
Discrete Output Number	8
Discrete Output Voltage	24 V
Discrete Output Voltage Type	DC
Product Compatibility	TWDLMDA20DTK TWDLMDA40DTK
Status Led	1 LED for power ON
Polarity Distribution	1 common/12 channels for input 1 common/8 channels for output
Short-Circuit Protection	2 A internal fuse, 5 x 20 mm, fast blow (controller side)
Connector Type	HE-10
Pin Number	26 pins
Fixing Mode	By clips, mounting on 35 mm symmetrical DIN rail conforming to IEC 60715 By screws
Maximum Supply Current	2 A
Switched Current	15 mA for input circuit 300 mA for output circuit

Disclaimer: This documentation is not intended as a substitute for and is not to be used for determining suitability or reliability of these products for specific user applications

Maximum Current Per Output Common	2 A
Voltage Drop On Power Supply Fuse	0.3 V
[UI] Rated Insulation Voltage	2000 V terminals/mounting rails
Overvoltage Category	II conforming to IEC 60664-1
Tightening Torque	0.6 N.m with flat Ø 3.5 mm screwdriver
Net Weight	0.43 kg

Environment

Standards	IEC 61131-2 Type 1
Product Certifications	CSA UL
Ip Degree Of Protection	IP2X conforming to IEC 60529
Resistance To Incandescent Wire	750 °C conforming to IEC 60695-2-11
Shock Resistance	15 gn for 11 ms conforming to IEC 60068-2-27
Vibration Resistance	2 gn (f= 10...150 Hz) conforming to IEC 60068-2-6
Resistance To Electrostatic Discharge	4 kV (contact) level 3 conforming to IEC 61000-4-2 8 kV (air) level 3 conforming to IEC 61000-4-2
Resistance To Radiated Fields	10 V/m (80000000...2000000000 Hz) conforming to IEC 61000-4-3 level 3
Resistance To Fast Transients	2 kV level 3 conforming to IEC 61000-4-4
Ambient Air Temperature For Operation	-5...60 °C conforming to IEC 61131-2
Ambient Air Temperature For Storage	-40...80 °C conforming to IEC 61131-2
Pollution Degree	2 conforming to IEC 60664-1

Packing Units

Unit Type Of Package 1	PCE
Number Of Units In Package 1	1
Package 1 Height	7.8 cm
Package 1 Width	9 cm
Package 1 Length	14 cm
Package 1 Weight	332 g

Contractual warranty

Warranty	18 months
----------	-----------

Sustainability



Green Premium™ label is Schneider Electric's commitment to delivering products with best-in-class environmental performance. Green Premium promises compliance with the latest regulations, transparency on environmental impacts, as well as circular and low-CO₂ products.

Guide to assessing product sustainability is a white paper that clarifies global eco-label standards and how to interpret environmental declarations.

[Learn more about Green Premium >](#)

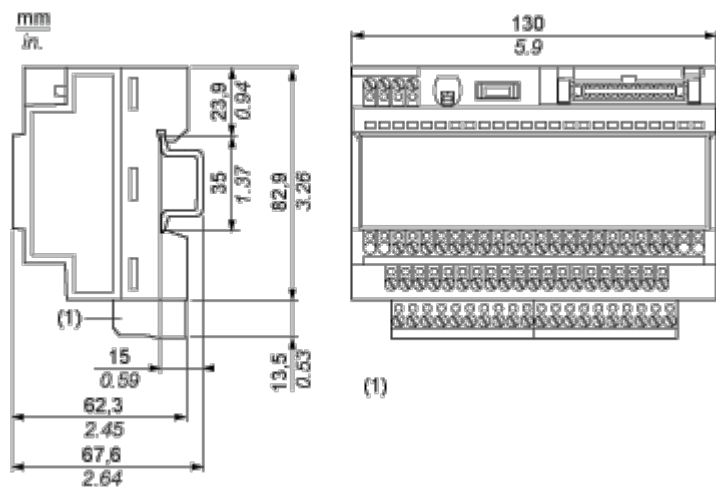
[Guide to assess a product's sustainability >](#)

Well-being performance

 Mercury Free	
 Rohs Exemption Information	Yes
Reach Regulation	REACH Declaration
Eu Rohs Directive	Pro-active compliance (Product out of EU RoHS legal scope)
China Rohs Regulation	China RoHS declaration
Weee	The product must be disposed on European Union markets following specific waste collection and never end up in rubbish bins
California Proposition 65	WARNING: This product can expose you to chemicals including: Lead and lead compounds, which is known to the State of California to cause cancer and birth defects or other reproductive harm. For more information go to www.P65Warnings.ca.gov

Dimensions Drawings

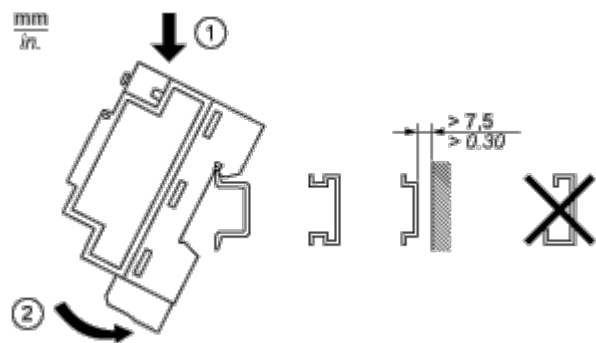
Dimensions



(1) ABE7BV10 / BV20 / BV20TB

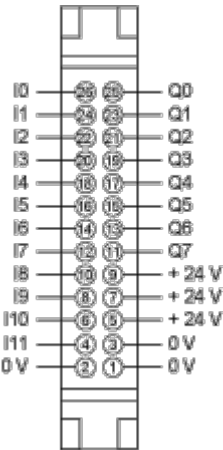
Mounting and Clearance

Mounting

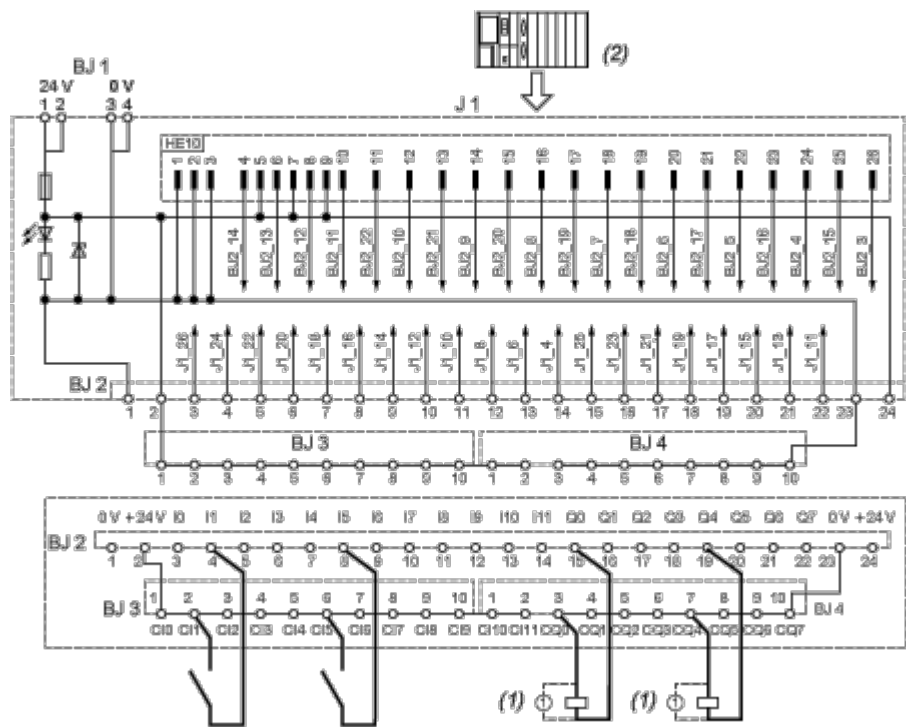


Connections and Schema

HE10 20 Channels



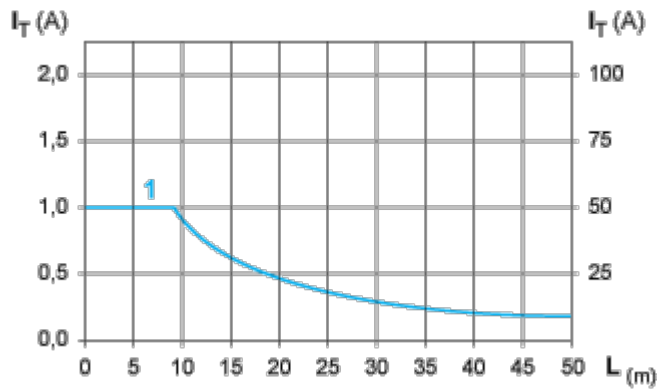
Wiring Diagram



- (1) Inductive load
- (2) Input sink

Performance Curves

Curves for Determining Cable Type and Length According to the Current



- L Cable length
- IT Total current per sub base (A)
- IA Average current per channel (mA)
- (1) Cables ABFT2..... c.s.a. 0.08 mm² (AWG 28)

The curves are given for a voltage drop of 1 V in the cable. For n volts tolerance, multiply the length determined from the graph by n.