

Product data sheet

Specifications



connection sub-base accessory - splitter sub-base - 16 channels

ABE7ACC02

Main

Range Of Product	Modicon ABE7
Accessory / Separate Part Designation	Splitter sub-base
Accessory / Separate Part Type	Splitter sub-base
Accessory / Separate Part Category	Connection accessories
Accessory / Separate Part Destination	Connection sub-base
Number Of Channels	16
Quantity Per Set	Set of 1

Complementary

Channel Splitting	2 x 8
Net Weight	0.075 kg

Packing Units

Unit Type Of Package 1	PCE
Number Of Units In Package 1	1
Package 1 Height	5.800 cm
Package 1 Width	7.800 cm
Package 1 Length	5.500 cm
Package 1 Weight	77.000 g
Unit Type Of Package 2	S03
Number Of Units In Package 2	30
Package 2 Height	30.000 cm
Package 2 Width	30.000 cm
Package 2 Length	40.000 cm
Package 2 Weight	2.801 kg

Contractual warranty

Warranty	18 months
----------	-----------

Disclaimer: This documentation is not intended as a substitute for and is not to be used for determining suitability or reliability of these products for specific user applications

Sustainability




Green Premium™ label is Schneider Electric's commitment to delivering products with best-in-class environmental performance. Green Premium promises compliance with the latest regulations, transparency on environmental impacts, as well as circular and low-CO₂ products.

Guide to assessing product sustainability is a white paper that clarifies global eco-label standards and how to interpret environmental declarations.

[Learn more about Green Premium >](#)

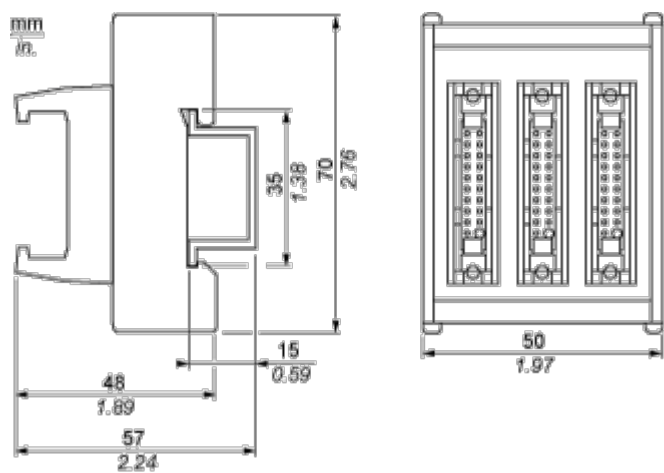
[Guide to assess a product's sustainability >](#)

Well-being performance

	Reach Free Of Svhc	
	Mercury Free	
	Rohs Exemption Information	Yes
Reach Regulation		REACH Declaration
Eu Rohs Directive		Pro-active compliance (Product out of EU RoHS legal scope)
China Rohs Regulation		China RoHS declaration
Weee		The product must be disposed on European Union markets following specific waste collection and never end up in rubbish bins
California Proposition 65		WARNING: This product can expose you to chemicals including: Lead and lead compounds, which is known to the State of California to cause cancer and birth defects or other reproductive harm. For more information go to www.P65Warnings.ca.gov

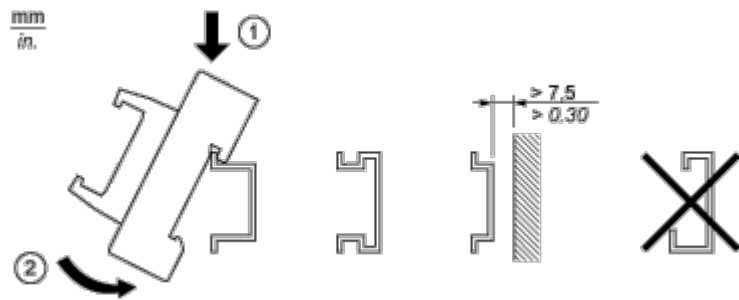
Dimensions Drawings

Dimensions



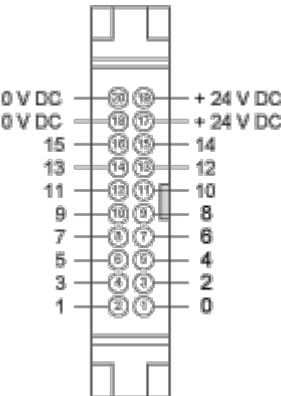
Mounting and Clearance

Mounting



Connections and Schema

HE10 16 Channels



Wiring Diagram

