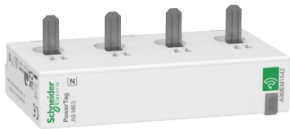


Product data sheet

Specifications



energy sensor, PowerTag Monoconnect 63A 3P+N bottom position

A9MEM1542

Main

Range Of Product	PowerLogic
Product Name	PowerTag A9 M63
Product Or Component Type	Energy sensor
Poles	3P + N
Maximum Current [Imax]	63 A
[Ib] Basic Current	10 A
Starting Current	40 mA
Saturation Current	130 A
Product Specific Application	Circuit monitoring Overload alarm Load monitoring Cost allocation Energy management
Concentrator Compatibility	Acti9 Smartlink SI B Acti9 Smartlink SI D Acti9 PowerTag Link C Acti9 PowerTag Link Acti9 PowerTag Link HD Wiser IP module EcoStruxure Panel Server Universal EcoStruxure Panel Server Advanced PrismaSet Active
Range Compatibility	Acti 9 Acti9 iKQE RCBO Multi9 Multi9 C60 Multi9 Multi9 ID Multi9 Multi9 C32N Multi9 Multi9 C65 Acti 9 Acti9 iLD Acti 9 Acti9 iLD K Acti 9 Acti9 iK60 Acti 9 Acti9 iKQ Acti 9 Acti9 K60 Acti 9 Acti9 Reflex iC60 Acti 9 Acti9 iC65 Acti 9 Acti9 DT60 Acti 9 Acti9 iC60 single terminal
Type Of Measurement	Voltage Power factor Active power Active energy Current
Accuracy Class	Class 1 current conforming to IEC 61557-12 Class 0.5 voltage conforming to IEC 61557-12 Class 1 active power conforming to IEC 61557-12 Class 1 active energy conforming to IEC 61557-12 Class 1 power factor conforming to IEC 61557-12
Mounting Location	Bottom

Disclaimer: This documentation is not intended as a substitute for and is not to be used for determining suitability or reliability of these products for specific user applications

Mounting Support	On circuit breaker
Product Destination	Switchboard
Event Management	Voltage loss with measured current at voltage loss
Transmission Support Medium	Radio frequency 2.4...2.4835 GHz conforming to IEEE 802.15.4
Emission Power	10 mW

Complementary

Mounting Mode	By screws (terminals)
Electrical Connection (Voltage Sensing & Power Supply)	Connector tooth
Cable Cross Section	1 rigid cable 1.5...16 mm ² 2 stranded cable 1.5...2.5 mm ² 2 rigid cable 1.5...2.5 mm ² 1 stranded cable 1.5...16 mm ²
Supply Voltage	220...240 V AC, +/- 20 %, between phase and neutral 380...415 V AC, +/- 20 %, between phases
Network Frequency	50 Hz 60 Hz
Maximum Power Consumption	2 VA
Standards	IEC 61557-12 IEC 61010-1 IEC 61010-2-030 IEC 61326-1 ETSI EN 300 328 ETSI EN 301 487-1
Height	16.5 mm
Width	72 mm
Depth	43 mm
Net Weight	35 g
Colour	White (RAL 9003)

Environment

Quality Labels	CE
Directives	2014/53/EU - radio equipment directive
Operating Altitude	0...2000 m
Ambient Air Temperature For Operation	-25...60 °C
Ambient Air Temperature For Storage	-40...85 °C
Overvoltage Category	III conforming to IEC 61010-1
Measurement Category	Category III conforming to IEC 61010-2-030
Ip Degree Of Protection	IP20 conforming to IEC 60529
Ik Degree Of Protection	IK05
Pollution Degree	3
Relative Humidity	0...95 % at 45 °C conforming to IEC 60721-3-3
Vibration Resistance	3M4 conforming to IEC 60721-3-3
Electromagnetic Compatibility	Industrial electromagnetic environment conforming to IEC 61326-1 Radiated EMC conforming to ETSI EN 301 489-17 Electromagnetic emission conforming to IEC 62311

Environmental Characteristics	Dustproof class 3S3 conforming to IEC 60721-3-3 Salt mist class 3C2 conforming to IEC 60721-3-3 Indoor use
-------------------------------	--

Packing Units

Unit Type Of Package 1	PCE
Number Of Units In Package 1	1
Package 1 Height	5.000 cm
Package 1 Width	6.000 cm
Package 1 Length	8.500 cm
Package 1 Weight	64.000 g
Unit Type Of Package 2	S02
Number Of Units In Package 2	48
Package 2 Height	15.000 cm
Package 2 Width	30.000 cm
Package 2 Length	40.000 cm
Package 2 Weight	3.340 kg

Sustainability

Green Premium™ label is Schneider Electric's commitment to delivering products with best-in-class environmental performance. Green Premium promises compliance with the latest regulations, transparency on environmental impacts, as well as circular and low-CO₂ products.

Guide to assessing product sustainability is a white paper that clarifies global eco-label standards and how to interpret environmental declarations.

[Learn more about Green Premium >](#)

[Guide to assess a product's sustainability >](#)



Transparency RoHS/REACH

Well-being performance

✓ Mercury Free

✓ Rohs Exemption Information [Yes](#)

Certifications & Standards

Reach Regulation	REACH Declaration
Eu Rohs Directive	Compliant with Exemptions
China Rohs Regulation	China RoHS declaration Product out of China RoHS scope. Substance declaration for your information
Environmental Disclosure	Product Environmental Profile
Weee	The product must be disposed on European Union markets following specific waste collection and never end up in rubbish bins
Circularity Profile	End of Life Information
California Proposition 65	WARNING: This product can expose you to chemicals including: Lead and lead compounds, which is known to the State of California to cause cancer and birth defects or other reproductive harm. For more information go to www.P65Warnings.ca.gov