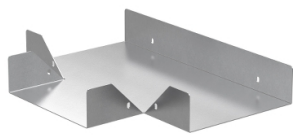


# Product data sheet

Specifications



## Wibe - reinforced T-junction W12/60-500 - FS - steel pre-galvanized

782460

 **Discontinued on:** Dec 12, 2018

 **Discontinued**

### Main

Range	Wibe
Range Of Product	Wibe Cable Trays
Product Or Component Type	Reinforced T-junction
Device Short Name	W12
Mounting Location	Partly outdoor environment with low exposure to corrosion ware-houses and parking garages

### Complementary

Operating Angle	90 °
Direction Change Type	Horizontal
Product Destination	Reinforced cable tray H= 60 mm W= 500 mm
Mounting Mode	Push-in
Fixing Mode	By locking plug By bolt
Material With Surface Treatment	Steel, pre-galvanized
Corrosion Class	C2
Height	58 mm
Width	597 mm
Depth	697 mm
Net Weight	337 kg / set of 100

### Packing Units

Unit Type Of Package 1	PCE
Number Of Units In Package 1	1
Package 1 Weight	3.37 g

### Contractual warranty

Warranty	18 months
----------	-----------

Disclaimer: This documentation is not intended as a substitute for and is not to be used for determining suitability or reliability of these products for specific user applications