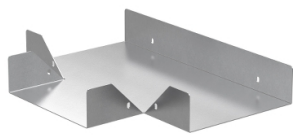


Product data sheet

Specifications



Wibe - T-junction W12/60-600 - steel pre-galvanized white

782431

⚠ Discontinued on: Jan 3, 2022

⚠ Discontinued

Main

Range	Wibe
Range Of Product	Wibe Cable Trays
Product Or Component Type	T-junction
Device Short Name	W12
Mounting Location	Partly outdoor environment with low exposure to corrosion ware-houses and parking garages

Complementary

Operating Angle	90 °
Direction Change Type	Horizontal
Product Destination	Cable tray H= 60 mm W= 600 mm
Mounting Mode	Push-in
Fixing Mode	By bolt By locking plug
Material With Surface Treatment	Steel, pre-galvanized white
Corrosion Class	C2
Height	58 mm
Width	697 mm
Depth	797 mm
Net Weight	585 kg / set of 100

Packing Units

Unit Type Of Package 1	PCE
Number Of Units In Package 1	1
Package 1 Height	5.8 cm
Package 1 Width	75.3 cm
Package 1 Length	79.8 cm
Package 1 Weight	5.85 kg

Contractual warranty

Warranty	18 months
----------	-----------

Disclaimer: This documentation is not intended as a substitute for and is not to be used for determining suitability or reliability of these products for specific user applications