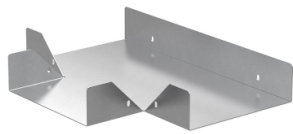


Product data sheet

Specifications



Wibe - T-junction W12/60-300 - steel pre-galvanized white

782428

⚠ Discontinued on: Jan 3, 2022

⚠ Discontinued

Important message: This product belongs to Cable Support which is no longer commercialized by Schneider Electric. As per the first of January 2022 the commercialization is managed by Wibe-Group, Please follow the link www.wibe-group.com for further details.

Main

Range	Wibe
Range Of Product	Wibe Cable Trays
Product Or Component Type	T-junction
Device Short Name	W12
Mounting Location	Partly outdoor environment with low exposure to corrosion ware-houses and parking garages

Complementary

Operating Angle	90 °
Direction Change Type	Horizontal
Product Destination	Cable tray H= 60 mm W= 300 mm
Mounting Mode	Push-in
Fixing Mode	By locking plug By bolt
Material With Surface Treatment	Steel, pre-galvanized white
Corrosion Class	C2
Height	58 mm
Width	397 mm
Depth	497 mm
Net Weight	217 kg / set of 100

Packing Units

Unit Type Of Package 1	PCE
Number Of Units In Package 1	1
Package 1 Height	5.8 cm
Package 1 Width	39.8 cm
Package 1 Length	49.8 cm
Package 1 Weight	2.17 kg

Contractual warranty

Disclaimer: This documentation is not intended as a substitute for and is not to be used for determining suitability or reliability of these products for specific user applications

Warranty

18 months

Sustainability

Green Premium™ label is Schneider Electric's commitment to delivering products with best-in-class environmental performance. Green Premium promises compliance with the latest regulations, transparency on environmental impacts, as well as circular and low-CO₂ products.

Guide to assessing product sustainability is a white paper that clarifies global eco-label standards and how to interpret environmental declarations.

[Learn more about Green Premium >](#)

[Guide to assess a product's sustainability >](#)



Transparency RoHS/REACH

Well-being performance

✓ Reach Free Of Svhc

✓ Toxic Heavy Metal Free

✓ Mercury Free

✓ Rohs Exemption Information Yes

Certifications & Standards

Reach Regulation	REACH Declaration
Eu Rohs Directive	Pro-active compliance (Product out of EU RoHS legal scope) EU RoHS Declaration
China Rohs Regulation	China RoHS declaration Pro-active China RoHS declaration (out of China RoHS legal scope)
Environmental Disclosure	Product Environmental Profile
Circularity Profile	No need of specific recycling operations