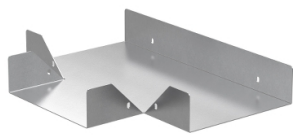


# Product data sheet

Specifications



## Wibe - T-junction W12/60-200 - steel pre-galvanized white

782427

 **Discontinued on:** Jan 3, 2022

 **Discontinued**

### Main

Range	Wibe
Range Of Product	Wibe Cable Trays
Product Or Component Type	T-junction
Device Short Name	W12
Mounting Location	Partly outdoor environment with low exposure to corrosion ware-houses and parking garages

### Complementary

Operating Angle	90 °
Direction Change Type	Horizontal
Product Destination	Cable tray H= 60 mm W= 200 mm
Mounting Mode	Push-in
Fixing Mode	By bolt By locking plug
Material With Surface Treatment	Steel, pre-galvanized white
Corrosion Class	C2
Height	58 mm
Width	297 mm
Depth	397 mm
Net Weight	133 kg / set of 100

### Packing Units

Unit Type Of Package 1	PCE
Number Of Units In Package 1	1
Package 1 Height	5.8 cm
Package 1 Width	29.8 cm
Package 1 Length	39.8 cm
Package 1 Weight	1.33 kg

### Contractual warranty

Warranty	18 months
----------	-----------

Disclaimer: This documentation is not intended as a substitute for and is not to be used for determining suitability or reliability of these products for specific user applications

## Sustainability

**Green Premium™ label** is Schneider Electric's commitment to delivering products with best-in-class environmental performance. Green Premium promises compliance with the latest regulations, transparency on environmental impacts, as well as circular and low-CO<sub>2</sub> products.

**Guide to assessing product sustainability** is a white paper that clarifies global eco-label standards and how to interpret environmental declarations.

[Learn more about Green Premium >](#)

[Guide to assess a product's sustainability >](#)



Transparency   RoHS/REACH

## Well-being performance

✓ Reach Free Of Svhc

✓ Toxic Heavy Metal Free

✓ Mercury Free

✓ Rohs Exemption Information   Yes

## Certifications & Standards

Reach Regulation	<a href="#">REACH Declaration</a>
Eu Rohs Directive	Pro-active compliance (Product out of EU RoHS legal scope) <a href="#">EU RoHS Declaration</a>
China Rohs Regulation	<a href="#">China RoHS declaration</a> Pro-active China RoHS declaration (out of China RoHS legal scope)
Environmental Disclosure	<a href="#">Product Environmental Profile</a>
Circularity Profile	No need of specific recycling operations