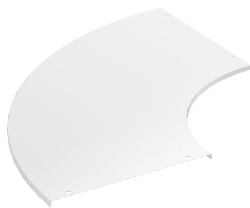


Product data sheet

Specifications



Wibe - cover 90° bend 15-200 - steel pre-galvanized white

781805

⚠ Discontinued on: Dec 8, 2017

⚠ Discontinued

Main

Range	Wibe
Product	Wibe Cable Ladders
Product Or Component Type	Cover
Mounting Location	Partly outdoor environment with low exposure to corrosion ware-houses and parking garages

Complementary

Product Destination	200 mm width 90° interior bend
Material With Surface Treatment	Steel, pre-galvanized white
Corrosion Class	C2
Length	470 mm
Height	10 mm
Width	470 mm
Net Weight	91 kg / set of 100

Packing Units

Unit Type Of Package 1	PCE
Number Of Units In Package 1	1
Package 1 Height	0.1 cm
Package 1 Width	0.1 cm
Package 1 Length	0.1 cm
Package 1 Weight	910 g

Contractual warranty

Warranty	18 months
----------	-----------

Disclaimer: This documentation is not intended as a substitute for and is not to be used for determining suitability or reliability of these products for specific user applications