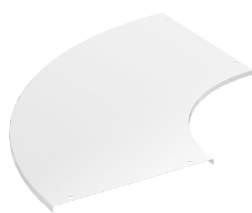


Product data sheet

Specifications



Wibe - cover 90° bend 500 - steel Zinkpox coated - white - RAL 9010

781755

⚠ Discontinued on: Jan 3, 2022

⚠ Discontinued

Main

Range	Wibe
Product	Wibe Cable Ladders
Product Or Component Type	Cover
Mounting Location	Area with almost permanent high levels of humidity and airborne pollution tunnels and dockyards
Operating Angle	90 °
Fixing Mode	By clamp
Direction Change Type	Horizontal

Complementary

Product Destination	500 mm width 90° interior bend
Material With Surface Treatment	Steel, Zinkpox coated white
Corrosion Class	C5-I
Colour Tint	White (RAL 9010)
Length	770 mm
Height	10 mm
Width	770 mm
Net Weight	299 kg / set of 100

Contractual warranty

Warranty	18 months
----------	-----------

Disclaimer: This documentation is not intended as a substitute for and is not to be used for determining suitability or reliability of these products for specific user applications