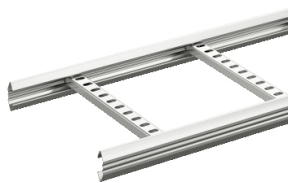


# Product data sheet

Specifications



## Wibe - cable ladder - KHZSPZ-200 - steel hot-dip galvanized - 6 m

734494

⚠ Discontinued on: Apr 15, 2020

⚠ End-of-service on: Jul 29, 2020

⚠ Discontinued

### Main

Range	Wibe
Product Name	Wibe Cable Ladders
Product Or Component Type	Cable ladder
Device Short Name	KHZSPZ
Device Application	Industrial application

### Complementary

Type Of Side Profile	Open profile
Type Of Rung	Perforated profile
Mounting Location	Outdoor Indoor
Rung Spacing	250 mm
Material With Surface Treatment	Steel, hot-dip galvanized
Corrosion Class	C3/C4
Height	55 mm
Width	200 mm
Length	6 m
Net Weight	200 kg / 100 m

### Environment

Mounting Location	Area with high level of environmental corrosion, humidity and airborne pollution industrial and coastal areas, chemical plants
Standards	IEC 61537

### Packing Units

Unit Type Of Package 1	PCE
Number Of Units In Package 1	1
Package 1 Height	5.5 cm
Package 1 Width	19.7 cm
Package 1 Length	600 cm
Package 1 Weight	11.3 kg

Disclaimer: This documentation is not intended as a substitute for and is not to be used for determining suitability or reliability of these products for specific user applications

# Contractual warranty

Warranty	18 months
----------	-----------

## Sustainability

**Green Premium™ label** is Schneider Electric's commitment to delivering products with best-in-class environmental performance. Green Premium promises compliance with the latest regulations, transparency on environmental impacts, as well as circular and low-CO<sub>2</sub> products.

**Guide to assessing product sustainability** is a white paper that clarifies global eco-label standards and how to interpret environmental declarations.

[Learn more about Green Premium >](#)

[Guide to assess a product's sustainability >](#)



Transparency   RoHS/REACH

## Well-being performance

✓ Reach Free Of Svhc

✓ Toxic Heavy Metal Free

✓ Mercury Free

✓ Rohs Exemption Information   Yes

## Certifications & Standards

Reach Regulation	<a href="#">REACH Declaration</a>
Eu Rohs Directive	Pro-active compliance (Product out of EU RoHS legal scope) <a href="#">EU RoHS Declaration</a>
China Rohs Regulation	<a href="#">China RoHS declaration</a> Pro-active China RoHS declaration (out of China RoHS legal scope)
Environmental Disclosure	<a href="#">Product Environmental Profile</a>
Circularity Profile	No need of specific recycling operations