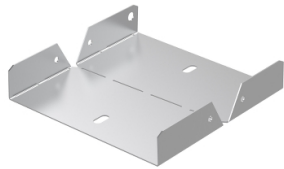


Product data sheet

Specifications



Wibe - vertical riser W11/40-50 - steel pre-galvanized

733498

 **Discontinued on:** Jan 3, 2022

 **Discontinued**

Important message: This product belongs to Cable Support which is no longer commercialized by Schneider Electric. As per the first of January 2022 the commercialization is managed by Wibe-Group, Please follow the link www.wibe-group.com for further details.

Main

Range	Wibe
Range Of Product	Wibe Cable Trays
Device Short Name	W11
Product Or Component Type	Riser
Mounting Location	Partly outdoor environment with low exposure to corrosion ware-houses and parking garages

Complementary

Operating Angle	0...90 °
Direction Change Type	Vertical
Product Destination	Cable tray H= 40 mm W= 50 mm
Mounting Mode	Push-in
Fixing Mode	By locking plug By bolt
Material With Surface Treatment	Steel, pre-galvanized
Corrosion Class	C2
Width	48 mm
Depth	150 mm
Net Weight	8 kg / set of 100

Packing Units

Unit Type Of Package 1	PCE
Number Of Units In Package 1	1
Package 1 Height	0.1 cm
Package 1 Width	16 cm
Package 1 Length	11.7 cm
Package 1 Weight	80 g

Disclaimer: This documentation is not intended as a substitute for and is not to be used for determining suitability or reliability of these products for specific user applications

Sustainability

Green Premium™ label is Schneider Electric's commitment to delivering products with best-in-class environmental performance. Green Premium promises compliance with the latest regulations, transparency on environmental impacts, as well as circular and low-CO₂ products.

Guide to assessing product sustainability is a white paper that clarifies global eco-label standards and how to interpret environmental declarations.

[Learn more about Green Premium >](#)

[Guide to assess a product's sustainability >](#)



Transparency RoHS/REACH

Well-being performance

✓ Reach Free Of Svhc

✓ Toxic Heavy Metal Free

✓ Mercury Free

✓ Rohs Exemption Information Yes

Certifications & Standards

Reach Regulation	REACH Declaration
Eu Rohs Directive	Pro-active compliance (Product out of EU RoHS legal scope) EU RoHS Declaration
China Rohs Regulation	China RoHS declaration Pro-active China RoHS declaration (out of China RoHS legal scope)
Environmental Disclosure	Product Environmental Profile
Circularity Profile	No need of specific recycling operations