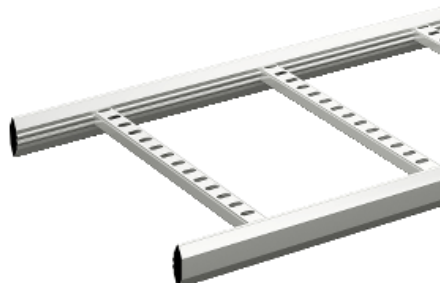


Product data sheet

Characteristics

727385

Wibe - cable ladder - KHZP-400 - stainless steel AISI 316L - 6 m



Main

Range	Wibe
Product name	Wibe Cable Ladders
Product or component type	Cable ladder
Device short name	KHZP
Device application	Industrial application

Complementary

Type of side profile	Closed profile
Type of rung	Perforated profile
Mounting location	Indoor Outdoor
Rung spacing	250 mm
Material with surface treatment	Stainless steel AISI 316L
Corrosion class	C5-M
Height	55 mm
Width	397 mm
Length	6 m
Product weight	315 kg / 100 m

Environment

Mounting location	For area with almost permanent high levels of humidity, airborne pollution and salt, such as purify-ing plants and offshore
Standards	IEC 61537

Contractual warranty

Warranty period	18 months
-----------------	-----------