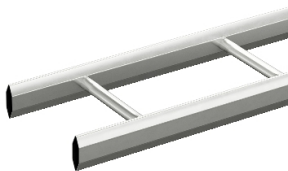



# Product data sheet

Specifications



## Wibe - cable ladder - KHZ-200 - stainless steel AISI 316L - 6 m

727377

 **Discontinued on:** Jan 3, 2022

 **Discontinued**

**Important message:** This product belongs to Cable Support which is no longer commercialized by Schneider Electric. As per the first of January 2022 the commercialization is managed by Wibe-Group, Please follow the link [www.wibe-group.com](http://www.wibe-group.com) for further details.

### Main

Range	Wibe
Product Name	Wibe Cable Ladders
Product Or Component Type	Cable ladder
Device Short Name	KHZ
Device Application	Industrial application

### Complementary

Type Of Side Profile	Closed profile
Type Of Rung	Round
Mounting Location	Outdoor Indoor
Rung Spacing	250 mm
Material With Surface Treatment	Stainless steel AISI 316L
Corrosion Class	C5-M
Height	55 mm
Width	200 mm
Length	6 m
Net Weight	280 kg / 100 m

### Environment

Mounting Location	Area with almost permanent high levels of humidity, airborne pollution and salt purifying plants and offshore
Standards	IEC 61537

### Packing Units

Unit Type Of Package 1	PCE
Number Of Units In Package 1	1
Package 1 Height	5.5 cm
Package 1 Width	20 cm
Package 1 Length	100 cm

Disclaimer: This documentation is not intended as a substitute for and is not to be used for determining suitability or reliability of these products for specific user applications

Package 1 Weight	2.8 kg
------------------	--------

## Contractual warranty

Warranty	18 months
----------	-----------

## Sustainability

**Green Premium™ label** is Schneider Electric's commitment to delivering products with best-in-class environmental performance. Green Premium promises compliance with the latest regulations, transparency on environmental impacts, as well as circular and low-CO<sub>2</sub> products.

**Guide to assessing product sustainability** is a white paper that clarifies global eco-label standards and how to interpret environmental declarations.

[Learn more about Green Premium >](#)

[Guide to assess a product's sustainability >](#)



Transparency   RoHS/REACH

## Well-being performance

✓ Reach Free Of Svhc

✓ Toxic Heavy Metal Free

✓ Mercury Free

✓ Rohs Exemption Information   Yes

## Certifications & Standards

Reach Regulation	<a href="#">REACH Declaration</a>
Eu Rohs Directive	Pro-active compliance (Product out of EU RoHS legal scope) <a href="#">EU RoHS Declaration</a>
China Rohs Regulation	<a href="#">China RoHS declaration</a> Pro-active China RoHS declaration (out of China RoHS legal scope)
Environmental Disclosure	<a href="#">Product Environmental Profile</a>
Circularity Profile	No need of specific recycling operations