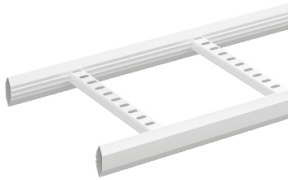


Product data sheet

Specifications



Wibe - cable ladder - KHZP-300 - steel Zinkpox coated white - 6 m

718593

 **Discontinued on:** Jan 3, 2022

 **Discontinued**

Important message: This product belongs to Cable Support which is no longer commercialized by Schneider Electric. As per the first of January 2022 the commercialization is managed by Wibe-Group, Please follow the link www.wibe-group.com for further details.

Main

| | |
|---------------------------|------------------------|
| Range | Wibe |
| Product Name | Wibe Cable Ladders |
| Product Or Component Type | Cable ladder |
| Device Short Name | KHZP |
| Device Application | Industrial application |

Complementary

| | |
|---------------------------------|-----------------------------|
| Type Of Side Profile | Closed profile |
| Type Of Rung | Perforated profile |
| Mounting Location | Outdoor Indoor |
| Rung Spacing | 250 mm |
| Material With Surface Treatment | Steel, Zinkpox coated white |
| Corrosion Class | C5-I |
| Height | 55 mm |
| Width | 300 mm |
| Length | 6 m |
| Net Weight | 290 kg / 100 m |

Environment

| | |
|-------------------|---|
| Mounting Location | Area with almost permanent high levels of humidity and airborne pollution tunnels and dockyards |
| Standards | IEC 61537 |

Packing Units

| | |
|------------------------------|--------|
| Unit Type Of Package 1 | PCE |
| Number Of Units In Package 1 | 1 |
| Package 1 Height | 5.5 cm |
| Package 1 Width | 30 cm |
| Package 1 Length | 100 cm |

Disclaimer: This documentation is not intended as a substitute for and is not to be used for determining suitability or reliability of these products for specific user applications

| | |
|------------------|--------|
| Package 1 Weight | 2.9 kg |
|------------------|--------|

Contractual warranty

| | |
|----------|-----------|
| Warranty | 18 months |
|----------|-----------|

Sustainability

Green Premium™ label is Schneider Electric's commitment to delivering products with best-in-class environmental performance. Green Premium promises compliance with the latest regulations, transparency on environmental impacts, as well as circular and low-CO₂ products.

Guide to assessing product sustainability is a white paper that clarifies global eco-label standards and how to interpret environmental declarations.

[Learn more about Green Premium >](#)

[Guide to assess a product's sustainability >](#)



Transparency RoHS/REACH

Well-being performance

✓ Reach Free Of Svhc

✓ Toxic Heavy Metal Free

✓ Mercury Free

✓ Rohs Exemption Information Yes

Certifications & Standards

| | |
|--------------------------|---|
| Reach Regulation | REACH Declaration |
| Eu Rohs Directive | Pro-active compliance (Product out of EU RoHS legal scope) EU RoHS Declaration |
| China Rohs Regulation | China RoHS declaration Pro-active China RoHS declaration (out of China RoHS legal scope) |
| Environmental Disclosure | Product Environmental Profile |
| Circularity Profile | No need of specific recycling operations |