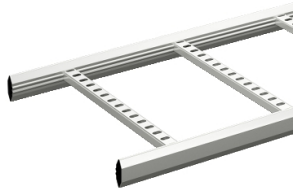


Product data sheet

Specifications



Wibe - cable ladder - KHZP-400 - steel hot-dip galvanized - 6 m

718565

 **Discontinued on:** Jan 3, 2022

 **Discontinued**

Important message: This product belongs to Cable Support which is no longer commercialized by Schneider Electric. As per the first of January 2022 the commercialization is managed by Wibe-Group, Please follow the link www.wibe-group.com for further details.

Main

Range	Wibe
Product Name	Wibe Cable Ladders
Product Or Component Type	Cable ladder
Device Short Name	KHZP
Device Application	Industrial application

Complementary

Type Of Side Profile	Closed profile
Type Of Rung	Perforated profile
Mounting Location	Indoor Outdoor
Rung Spacing	250 mm
Material With Surface Treatment	Steel, hot-dip galvanized
Corrosion Class	C3/C4
Height	55 mm
Width	400 mm
Length	6 m
Net Weight	315 kg / 100 m

Environment

Mounting Location	Area with high level of environmental corrosion, humidity and airborne pollution industrial and coastal areas, chemical plants
Standards	IEC 61537

Packing Units

Unit Type Of Package 1	PCE
Number Of Units In Package 1	1
Package 1 Height	5.5 cm
Package 1 Width	40 cm
Package 1 Length	100 cm

Disclaimer: This documentation is not intended as a substitute for and is not to be used for determining suitability or reliability of these products for specific user applications

Package 1 Weight	3.15 kg
------------------	---------

Contractual warranty

Warranty	18 months
----------	-----------

Sustainability

Green Premium™ label is Schneider Electric's commitment to delivering products with best-in-class environmental performance. Green Premium promises compliance with the latest regulations, transparency on environmental impacts, as well as circular and low-CO₂ products.

Guide to assessing product sustainability is a white paper that clarifies global eco-label standards and how to interpret environmental declarations.

[Learn more about Green Premium >](#)

[Guide to assess a product's sustainability >](#)



Transparency RoHS/REACH

Well-being performance

✓ Reach Free Of Svhc

✓ Toxic Heavy Metal Free

✓ Mercury Free

✓ Rohs Exemption Information Yes

Certifications & Standards

Reach Regulation	REACH Declaration
Eu Rohs Directive	Pro-active compliance (Product out of EU RoHS legal scope) EU RoHS Declaration
China Rohs Regulation	China RoHS declaration Pro-active China RoHS declaration (out of China RoHS legal scope)
Environmental Disclosure	Product Environmental Profile
Circularity Profile	No need of specific recycling operations