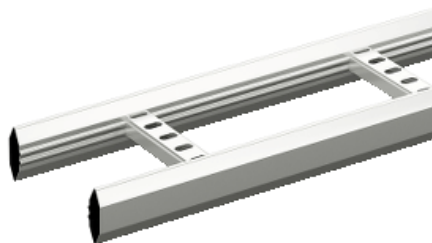


Product data sheet

Characteristics

718562

Wibe - cable ladder - KHZP-150 - steel hot-dip galvanized - 6 m



Main

Range	Wibe
Product name	Wibe Cable Ladders
Product or component type	Cable ladder
Device short name	KHZP
Device application	Industrial application

Complementary

Type of side profile	Closed profile
Type of rung	Perforated profile
Mounting location	Outdoor Indoor
Rung spacing	250 mm
Material with surface treatment	Steel, hot-dip galvanized
Corrosion class	C3/C4
Height	55 mm
Width	147 mm
Length	6 m
Product weight	260 kg / 100 m

Environment

Mounting location	For area with high level of environmental corrosion, humidity and airborne pollution, such as industrial and coastal areas, chemical plants
Standards	IEC 61537

Contractual warranty

Warranty period	18 months
-----------------	-----------