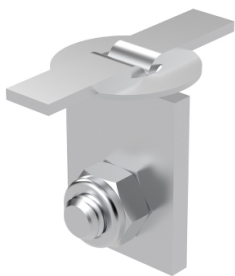


Product data sheet

Specifications



Wibe - fixing Ogebe type E - for 0.7...0.9 mm board - steel electro-galvanized

716474

 **Discontinued on:** Jan 3, 2022

 **Discontinued**

Important message: This product belongs to Cable Support which is no longer commercialized by Schneider Electric. As per the first of January 2022 the commercialization is managed by Wibe-Group, Please follow the link www.wibe-group.com for further details.

Main

Range	Wibe
Range Of Product	Wibe Cable Trays
Product Or Component Type	Fixing
Device Short Name	Ogebe type E

Complementary

Mounting Support	For 0.7...0.9 mm board
Material With Surface Treatment	Steel, electro-galvanized
Height	40 mm
Width	48 mm
Depth	25 mm
Net Weight	4.8 kg / set of 100

Packing Units

Unit Type Of Package 1	PCE
Number Of Units In Package 1	1
Package 1 Height	3 cm
Package 1 Width	3 cm
Package 1 Length	4 cm
Package 1 Weight	48 g

Contractual warranty

Warranty	18 months
----------	-----------

Disclaimer: This documentation is not intended as a substitute for and is not to be used for determining suitability or reliability of these products for specific user applications

Sustainability

Green Premium™ label is Schneider Electric's commitment to delivering products with best-in-class environmental performance. Green Premium promises compliance with the latest regulations, transparency on environmental impacts, as well as circular and low-CO₂ products.

Guide to assessing product sustainability is a white paper that clarifies global eco-label standards and how to interpret environmental declarations.

[Learn more about Green Premium >](#)

[Guide to assess a product's sustainability >](#)



Transparency RoHS/REACH

Well-being performance

✓ Reach Free Of Svhc

✓ Toxic Heavy Metal Free

✓ Mercury Free

✓ Rohs Exemption Information [Yes](#)

Certifications & Standards

Reach Regulation	REACH Declaration
Eu Rohs Directive	Pro-active compliance (Product out of EU RoHS legal scope) EU RoHS Declaration
China Rohs Regulation	China RoHS declaration Pro-active China RoHS declaration (out of China RoHS legal scope)
Environmental Disclosure	Product Environmental Profile
Circularity Profile	No need of specific recycling operations