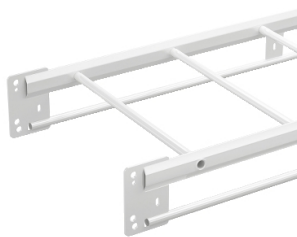


Product data sheet

Specifications



Wibe - reinforced cable ladder - KHZV-500 - steel Zinkpox coated white - 6 m

714201

⚠ Discontinued on: Jan 3, 2022

⚠ Discontinued

Main

Range	Wibe
Product Name	Wibe Cable Ladders
Product Or Component Type	Reinforced cable ladder
Device Short Name	KHZV
Device Application	Industrial application

Complementary

Type Of Side Profile	Closed profile
Type Of Rung	Round
Mounting Location	Outdoor Indoor
Rung Spacing	250 mm
Material With Surface Treatment	Steel, Zinkpox coated white
Corrosion Class	C5-I
Height	150 mm
Width	500 mm
Length	6 m
Net Weight	500 kg / 100 m

Environment

Mounting Location	Area with almost permanent high levels of humidity and airborne pollution tunnels and dockyards
Standards	IEC 61537

Packing Units

Unit Type Of Package 1	PCE
Number Of Units In Package 1	1
Package 1 Height	15 cm
Package 1 Width	49.7 cm
Package 1 Length	600 cm
Package 1 Weight	30.3 kg

Disclaimer: This documentation is not intended as a substitute for and is not to be used for determining suitability or reliability of these products for specific user applications

Contractual warranty

Warranty	18 months
----------	-----------

Sustainability

Green Premium™ label is Schneider Electric's commitment to delivering products with best-in-class environmental performance. Green Premium promises compliance with the latest regulations, transparency on environmental impacts, as well as circular and low-CO₂ products.

Guide to assessing product sustainability is a white paper that clarifies global eco-label standards and how to interpret environmental declarations.

[Learn more about Green Premium >](#)

[Guide to assess a product's sustainability >](#)



Transparency RoHS/REACH

Well-being performance

✓ Reach Free Of Svhc

✓ Toxic Heavy Metal Free

✓ Mercury Free

✓ Rohs Exemption Information Yes

Certifications & Standards

Reach Regulation	REACH Declaration
Eu Rohs Directive	Pro-active compliance (Product out of EU RoHS legal scope) EU RoHS Declaration
China Rohs Regulation	China RoHS declaration Pro-active China RoHS declaration (out of China RoHS legal scope)
Environmental Disclosure	Product Environmental Profile
Circularity Profile	No need of specific recycling operations