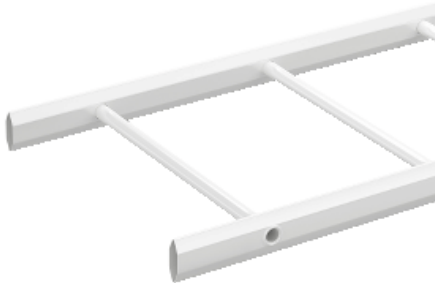


# Product data sheet

## Characteristics

# 714062

## Wibe - cable ladder - KHZ-400 - steel Zinkpox coated white - 6 m



### Main

Range	Wibe
Product name	Wibe Cable Ladders
Product or component type	Cable ladder
Device short name	KHZ
Device application	Industrial application

### Complementary

Type of side profile	Closed profile
Type of rung	Round
Mounting location	Indoor Outdoor
Rung spacing	250 mm
Material with surface treatment	Steel, Zinkpox coated white
Corrosion class	C5-I
Height	55 mm
Width	397 mm
Length	6 m
Product weight	320 kg / 100 m

### Environment

Mounting location	For area with almost permanent high levels of humidity and airborne pollution, such as tunnels and dockyards
Standards	IEC 61537

### Contractual warranty

Warranty period	18 months
-----------------	-----------