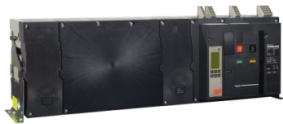


Product data sheet

Specifications



Switch disconnecter, MasterPact NW50HH, 5000A, 220kA/440VAC 50/60Hz (Icm), 4 poles, fixed

46136

Main

Range	MasterPacT
Product Name	MasterPact NW
Product Or Component Type	Switch disconnecter
Device Short Name	MasterPact NW50
Switch-Disconnecter Name	MasterPact NW50HH
Device Application	Protection
Poles Description	4P
Network Type	AC
Network Frequency	50/60 Hz
[Ie] Rated Operational Current	AC-23A: 5000 A AC 50/60 Hz 690 V
[Ui] Rated Insulation Voltage	1000 V AC 50/60 Hz conforming to IEC 60947-3
[Uimp] Rated Impulse Withstand Voltage	12 kV conforming to IEC 60947-3
[Icm] Rated Short-Circuit Making Capacity	220 kA 690 V AC at 50/60 Hz
[Ue] Rated Operational Voltage	690 V AC 50/60 Hz conforming to IEC 60947-3
Breaking Capacity Code	HH
Suitability For Isolation	Yes conforming to IEC 60947-3
Contact Position Indicator	Yes
Visible Break	No
Pollution Degree	4 conforming to IEC 60664-1

Complementary

Control Type	Push-button
Mounting Mode	Fixed
Operating Rate	10 cyc/h maximum
[Icw] Rated Short-Time Withstand Current	100 kA during 1 s conforming to IEC 60947-3 100 kA during 3 s conforming to IEC 60947-4
Mechanical Durability	10000 cycles with maintenance conforming to IEC 60947-3
Electrical Durability	AC-23A: 1500 cycles 690 V AC 50/60 Hz without maintenance conforming to IEC 60947-3
Connection Pitch	230 mm
Height	352 mm
Width	997 mm

Disclaimer: This documentation is not intended as a substitute for and is not to be used for determining suitability or reliability of these products for specific user applications

Depth	297 mm
Net Weight	160 kg
Integral Instant Protection	75 kA

Environment

Standards	IEC 60947-3
Product Certifications	ASEFA
Ip Degree Of Protection	IP30
Ambient Air Temperature For Operation	-25...70 °C
Ambient Air Temperature For Storage	-40...85 °C

Packing Units

Unit Type Of Package 1	PCE
Number Of Units In Package 1	1
Package 1 Height	479.0 cm
Package 1 Width	395.0 cm
Package 1 Length	1016.0 cm
Package 1 Weight	300.0 kg

Contractual warranty

Warranty	18 months
----------	-----------

Sustainability

Green Premium™ label is Schneider Electric's commitment to delivering products with best-in-class environmental performance. Green Premium promises compliance with the latest regulations, transparency on environmental impacts, as well as circular and low-CO₂ products.

Guide to assessing product sustainability is a white paper that clarifies global eco-label standards and how to interpret environmental declarations.

[Learn more about Green Premium >](#)

[Guide to assess a product's sustainability >](#)



Transparency RoHS/REACH

Well-being performance

✓ Mercury Free

✓ Rohs Exemption Information [Yes](#)

✓ Pvc Free

Certifications & Standards

Reach Regulation	REACH Declaration
Eu Rohs Directive	Compliant with Exemptions
China Rohs Regulation	China RoHS declaration Product out of China RoHS scope. Substance declaration for your information
Environmental Disclosure	Product Environmental Profile
Weee	The product must be disposed on European Union markets following specific waste collection and never end up in rubbish bins
Circularity Profile	End of Life Information
California Proposition 65	WARNING: This product can expose you to chemicals including: DINP, which is known to the State of California to cause cancer, and DIDP, which is known to the State of California to cause birth defects or other reproductive harm. For more information go to www.P65Warnings.ca.gov