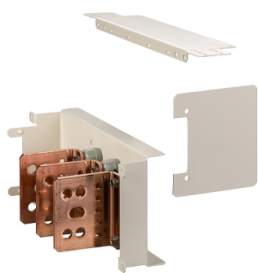



Product data sheet

Specifications



Transfert assembly without connection 250A - 3P - Height 3 to 5 mod of 50 mm

06606

 **Discontinued on:** Jan 8, 2021

 **Discontinued**

Main

Range	Prisma
Range Of Product	Prisma PH
Product Or Component Type	Connection transfer assembly
Product Name	Prisma Prisma PH enclosure Spacial Spacial SFP enclosure
Accessory / Separate Part Category	Interface accessory
Provided Equipment	Fixing frame Fixing elements
Standards	IEC 61439-2 IEC 61439-1

Complementary

Poles Description	3P
Installation Description	Cubicle
[Ie] Rated Operational Current	250 A
Quantity Per Set	Set of 1

Packing Units

Unit Type Of Package 1	PCE
Number Of Units In Package 1	1
Package 1 Height	16 cm
Package 1 Width	27.5 cm
Package 1 Length	39.5 cm
Package 1 Weight	3.555 kg

Disclaimer: This documentation is not intended as a substitute for and is not to be used for determining suitability or reliability of these products for specific user applications

Sustainability

Green Premium™ label is Schneider Electric's commitment to delivering products with best-in-class environmental performance. Green Premium promises compliance with the latest regulations, transparency on environmental impacts, as well as circular and low-CO₂ products.

Guide to assessing product sustainability is a white paper that clarifies global eco-label standards and how to interpret environmental declarations.

[Learn more about Green Premium >](#)

[Guide to assess a product's sustainability >](#)



Transparency RoHS/REACH

Well-being performance

✓ Reach Free Of Svhc

✓ Toxic Heavy Metal Free

✓ Mercury Free

✓ Rohs Exemption Information [Yes](#)

Certifications & Standards

Eu Rohs Directive	Pro-active compliance (Product out of EU RoHS legal scope) EU RoHS Declaration
-------------------	---

China Rohs Regulation	China RoHS declaration
-----------------------	--

Environmental Disclosure	Product Environmental Profile
--------------------------	---

Circularity Profile	End of Life Information
---------------------	---