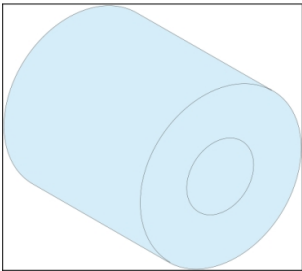


# Product data sheet

Specifications



## 2 INSULAT.SPACERS/NEUTRAL BAR LINERGY TB

04210

 **Discontinued on:** Nov 29, 2021

 **Discontinued**

### Main

Range	Linergy
Range Of Product	Linergy
Product Or Component Type	Kit for neutral bar
Product Name	Linergy TB
Accessory / Separate Part Category	Installation accessory
Range Compatibility	Prisma Prisma G enclosure Prisma Prisma P cubicle Linergy Linergy TB earthing bar
Provided Equipment	1 screw 1 insulating spacer

### Complementary

Installation Description	Floor-standing enclosure - width 600 mm Wall-mounted enclosure - width 600 mm Floor-standing duct - width 300 mm Wall-mounted duct - width 300 mm Cubicle Cubicle duct
Quantity Per Set	Set of 1
Net Weight	0.02 kg

### Packing Units

Unit Type Of Package 1	PCE
Number Of Units In Package 1	1

Disclaimer: This documentation is not intended as a substitute for and is not to be used for determining suitability or reliability of these products for specific user applications

## Sustainability

**Green Premium™ label** is Schneider Electric's commitment to delivering products with best-in-class environmental performance. Green Premium promises compliance with the latest regulations, transparency on environmental impacts, as well as circular and low-CO<sub>2</sub> products.

**Guide to assessing product sustainability** is a white paper that clarifies global eco-label standards and how to interpret environmental declarations.

[Learn more about Green Premium >](#)

[Guide to assess a product's sustainability >](#)



Transparency   RoHS/REACH

## Well-being performance

✓ Reach Free Of Svhc

✓ Toxic Heavy Metal Free

✓ Mercury Free

✓ Rohs Exemption Information   [Yes](#)

## Certifications & Standards

Eu Rohs Directive   [Compliant](#)  
[EU RoHS Declaration](#)

China Rohs Regulation   [China RoHS declaration](#)  
Pro-active China RoHS declaration (out of China RoHS legal scope)

Environmental Disclosure   [Product Environmental Profile](#)