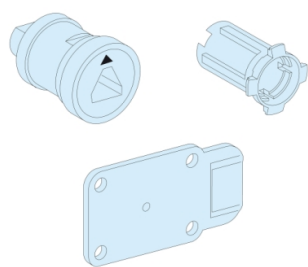


# Product data sheet

Specifications



## CLOSING SYSTEM AFS IP55

01249

⚠ Discontinued on: Nov 29, 2021

⚠ Discontinued

### Main

Range	Prisma
Range Of Product	Prisma G
Product Or Component Type	Accessory
Accessory / Separate Part Category	Spare part
Range Compatibility	Prisma Prisma G enclosure
Provided Equipment	1 stop washer 1 captive screw 1 screw nut 1 screw cap 1 special washer 1 composite seal 1 washer 1 o-ring 1 screw body 1 cam

### Complementary

Mounting Support	Door
Installation Description	Wall-mounted enclosure Floor-standing enclosure
Height	42 mm
Width	70 mm
Depth	40 mm
Net Weight	0.18 kg

### Packing Units

Unit Type Of Package 1	PCE
Number Of Units In Package 1	1
Package 1 Height	3.7 cm
Package 1 Width	5.1 cm
Package 1 Length	6.6 cm
Package 1 Weight	140 g

Disclaimer: This documentation is not intended as a substitute for and is not to be used for determining suitability or reliability of these products for specific user applications

## Sustainability

**Green Premium™** label is Schneider Electric's commitment to delivering products with best-in-class environmental performance. Green Premium promises compliance with the latest regulations, transparency on environmental impacts, as well as circular and low-CO<sub>2</sub> products.

**Guide to assessing product sustainability** is a white paper that clarifies global eco-label standards and how to interpret environmental declarations.

[Learn more about Green Premium >](#)

[Guide to assess a product's sustainability >](#)



Transparency   RoHS/REACH

## Well-being performance



Mercury Free



RoHS Exemption Information

[Yes](#)



Halogen Free Plastic Parts Product

## Certifications & Standards

**Eu RoHS Directive**

Pro-active compliance (Product out of EU RoHS legal scope)

[EU RoHS Declaration](#)

**China RoHS Regulation**

[China RoHS declaration](#)

Product out of China RoHS scope. Substance declaration for your information

**Environmental Disclosure**

[Product Environmental Profile](#)